

bq24171 具有集成型 MOSFET 及电源路径选择器并符合 JEITA 标准的独立型开关模式锂离子和锂聚合物电池充电器

1 特性

- 符合 JEITA 标准的电池温度感测
- 具有 4A 集成型 N 沟道金属氧化物半导体场效应晶体管 (MOSFET) 的 1.6MHz 同步开关模式充电器
- 效率高达 94%
- 30V 额定输入电压，具有可调节过压保护功能
 - 输入工作电压范围：4.5V 至 17V
- 电池充电电压
 - 可调节充电电压，最多可为 3 节电池充电
- 高集成度
 - 自动电源路径选择器，在适配器和电池之间选择
 - 动态电源管理
 - 集成 20V 开关 MOSFET
 - 集成型自举二极管
 - 内部环路补偿
 - 内部数字软启动
- 安全
 - 通过热调节环路降低电流，将 T_J 限制为 120°C
 - 热关断
 - 电池热敏电阻可感测高温/低温充电暂停并检测电池
 - 具有可编程阈值的输入过压保护
 - 逐周期电流限制
- 精度
 - $\pm 0.5\%$ 充电电压调节
 - $\pm 4\%$ 充电电流调节
 - $\pm 4\%$ 输入电流调节
- 移除适配器后的电池电流低于 15 μ A
- 接入适配器但禁用充电电路时的输入电流低于 1.5mA
- 小型四方扁平无引线 (QFN) 封装
 - 24 引脚 5.5mm \times 3.5mm QFN 封装

2 应用

- 平板电脑
- 上网本和超便携计算机
- 便携式数据采集终端
- 便携式打印机
- 医疗诊断设备
- 座式电池充电器
- 备用电池系统

3 说明

bq24171 器件是一款高度集成的独立型锂离子及锂聚合物开关模式电池充电器，具有两个集成型 N 沟道功率 MOSFET。该器件提供了一个恒定频率同步 PWM 控制器，可对输入电流、充电电流和电压进行高精度的调节。bq24171 可严密监视电池组的温度，只允许在符合 JEITA 配置文件的窗口内进行充电——在低温条件下充电速率较低，在高温条件下则充电电压较低。

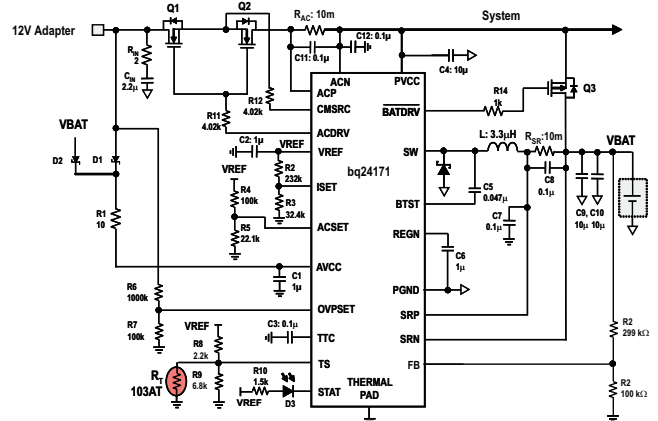
bq24171 分三个阶段对电池进行充电：预充电、恒定电流充电和恒定电压充电。bq24171 可调节电池电压，最多能为 3 节电池充电。

器件信息(1)

| 器件型号 | 封装 | 封装尺寸（标称值） |
|---------|-----------|-----------------------|
| bq24171 | VQFN (24) | 5.5mm \times 3.50mm |

(1) 要了解所有可用封装，请见数据表末尾的可订购产品附录。

典型应用电路原理图



目录

| | | | | | |
|-----|--|----|------|--------------------------------------|----|
| 1 | 特性 | 1 | 9.3 | Feature Description | 16 |
| 2 | 应用 | 1 | 9.4 | Device Functional Modes | 24 |
| 3 | 说明 | 1 | 10 | Application and Implementation | 25 |
| 4 | 修订历史记录 | 2 | 10.1 | Application Information | 25 |
| 5 | 说明（续） | 3 | 10.2 | Typical Application | 25 |
| 6 | Device Comparison Table | 3 | 10.3 | System Examples | 28 |
| 7 | Pin Configuration and Functions | 4 | 11 | Power Supply Recommendations | 29 |
| 8 | Specifications | 6 | 12 | Layout | 29 |
| 8.1 | Absolute Maximum Ratings | 6 | 12.1 | Layout Guidelines | 29 |
| 8.2 | ESD Ratings | 6 | 12.2 | Layout Example | 30 |
| 8.3 | Recommended Operating Conditions | 6 | 13 | 器件和文档支持 | 31 |
| 8.4 | Thermal Information | 6 | 13.1 | 器件支持 | 31 |
| 8.5 | Electrical Characteristics | 7 | 13.2 | 文档支持 | 31 |
| 8.6 | Typical Characteristics | 12 | 13.3 | 商标 | 31 |
| 9 | Detailed Description | 15 | 13.4 | 静电放电警告 | 31 |
| 9.1 | Overview | 15 | 13.5 | 术语表 | 31 |
| 9.2 | Functional Block Diagram | 15 | 14 | 机械、封装和可订购信息 | 31 |

4 修订历史记录

NOTE: Page numbers for previous revisions may differ from page numbers in the current version.

| Changes from Revision B (October 2013) to Revision C | Page |
|---|------|
| • 已添加 ESD 额定值表，特性描述部分，器件功能模式，应用和实施部分，电源相关建议部分，布局部分，器件和文档支持部分以及机械、封装和可订购信息部分 | 1 |

| Changes from Revision A (April 2011) to Revision B | Page |
|---|------|
| • 已更改 出版物至版本 B，2013 年 10 月 | 1 |
| • Changed figure reference pointer from "Figure 22" to "Figure 23" in INPUT ADFET AND RBDET SELECTION description | 27 |
| • Changed resistor name in Figure 21 from "Rsns" to "Rac" | 27 |
| • Changed Figure 23 diode D1 symbol to a more distinct image to show it is a Schottky diode. | 28 |

| Changes from Original (February 2011) to Revision A | Page |
|--|------|
| • 已更改 出版物至版本 A，2011 年 5 月 | 1 |
| • 已更改 第 4 项特性要点“输入工作电压范围：4.5V 至 17V”至“30V 额定输入电压，具有可调节过压保护功能”以及分项“输入工作电压范围：4.5V 至 17V” | 1 |
| • 已添加 在第 2 页顶部添加了注释；在第 2 页添加了标题“说明（续）”以及新段落（开头为“bq24171 通过电压高达 17V 的直流电源对电池进行充电。”） | 3 |
| • Changed ABS MAX table first-row descriptors from "PVCC, AVCC, ACN, CMSRC, STAT" to "AVCC, ACP, ACN, ACDRV, CMSRC, STAT" and second-row descriptor from "ACDRV, BTST" to "PVCC"; changed PVCC max voltage from 30V to 20V | 6 |
| • Changed hyperlink to point to Design Tool sluc244a | 23 |
| • Added new paragraph under INPUT FILTER DESIGN section (beginning..."If the input is 5V....") | 27 |
| • Added connection between CMSRC and ACP in Figure 2 Typical Application schematic | 28 |

5 说明（续）

bq24171 分三个阶段对电池进行充电：预充电、恒定电流充电和恒定电压充电。该器件可针对多达 3 节串联锂离子电池进行调节。

当电流达到快速充电速率的 10% 时，充电操作被终止。可编程充电定时器提供安全备份。如果电池电压降至内部阈值以下，则 bq24171 将自动重新启动充电周期，并在输入电压降至低于电池电压时进入低静态电流休眠模式。

bq24171 具有动态电源管理 (DPM) 功能，可在达到输入功率限值时减小充电电流，以避免适配器承受过大的负载。高精度电流感测放大器能够精确测量适配器的输入电流，以监视总系统功率。

bq24171 器件在输入 NMOS 对 (ACFET (Q1) 和 RBFET (Q2)) 上提供了电源通路选择栅极驱动器 ACDRV/CMSRC，并在电池 PMOS 器件 (Q3) 上提供了 BATDRV。当接入合格的适配器时，系统将直接与适配器相连。否则，系统将连接至电池。此外，电源路径还可防止电池对输入进行返回升压。

bq24171 通过电压高达 17V 的直流电源对电池进行充电，包括汽车电池。输入过压限值可通过 OVPSET 引脚进行调节。AVCC、ACP 和 ACN 引脚的额定电压为 30V。当接入高压直流电源时，Q1 和 Q2 保持关断状态，以避免高电压对系统造成损害。

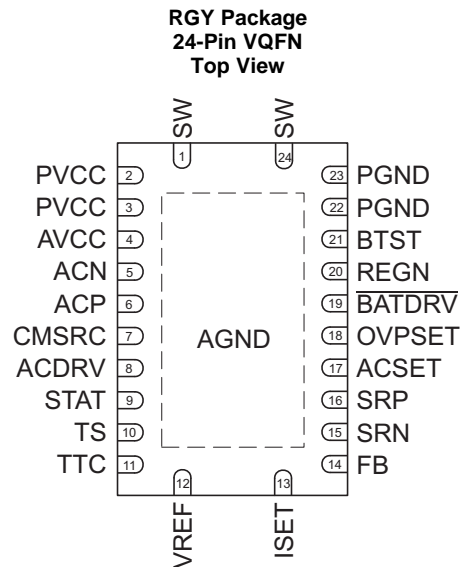
对于单节电池应用，如果电池是不可拆卸的，则可将系统直接连接至电池以简化电源路径设计并降低成本。利用这种配置，电池就能够在适配器过载的情况下自动地对系统负载提供补充供电。

bq24171 采用 24 引脚 5.5mm × 3.5mm 薄型 QFN 封装。

6 Device Comparison Table

| | INPUT VOLTAGE | MAX CHARGE RATE | BATTERY VOLTAGE | JEITA |
|---------|---------------|-----------------|-----------------|-------|
| bq24133 | 4.5 V to 17 V | 2.5 A | 4.2 V/cell | No |
| bq24170 | | 4 A | 4.2 V/cell | No |
| bq24171 | | | Adjustable | Yes |
| bq24172 | | | Adjustable | No |

7 Pin Configuration and Functions



Pin Functions

| PIN | | TYPE | DESCRIPTION |
|--------|-------------|------|---|
| NAME | NO. | | |
| ACDRV | 8 | O | AC adapter to system switch driver output. Connect to 4-kΩ resistor then to the gate of the ACFET N-channel power MOSFET and the reverse conduction blocking N-channel power MOSFET. Connect both FETs as common-source. The internal gate drive is asymmetrical, allowing a quick turnoff and slower turnon in addition to the internal break-before-make logic with respect to the BATDRV. |
| ACN | 5 | I | Adapter current sense resistor negative input. A 0.1-μF ceramic capacitor is placed from ACN to ACP to provide differential-mode filtering. An optional 0.1-μF ceramic capacitor is placed from ACN pin to AGND for common-mode filtering. |
| ACP | 6 | P/I | Adapter current sense resistor positive input. A 0.1-μF ceramic capacitor is placed from ACN to ACP to provide differential-mode filtering. A 0.1-μF ceramic capacitor is placed from ACP pin to AGND for common-mode filtering. |
| ACSET | 17 | I | Input current set point. Use a voltage divider from VREF to ACSET to AGND to set this value: $I_{DPM} = \frac{V_{ACSET}}{20 \times R_{AC}}$ |
| AGND | Thermal Pad | P | Exposed pad beneath the IC. Always solder Thermal Pad to the board, and have vias on the Thermal Pad plane star-connecting to AGND and ground plane for high-current power converter. It dissipates the heat from the IC. |
| AVCC | 4 | P | IC power positive supply. Place a 1-μF ceramic capacitor from AVCC to AGND and place it as close as possible to IC. Place a 10-Ω resistor from input side to AVCC pin to filter the noise. For 5-V input, a 5-Ω resistor is recommended. |
| BATDRV | 19 | O | Battery discharge MOSFET gate driver output. Connect to 1-kΩ resistor to the gate of the BATFET P-channel power MOSFET. Connect the source of the BATFET to the system load voltage node. Connect the drain of the BATFET to the battery pack positive node. The internal gate drive is asymmetrical to allow a quick turnoff and slower turnon, in addition to the internal break-before-make logic with respect to ACDRV. |
| BTST | 21 | P | PWM high-side driver positive supply. Connect the 0.047-μF bootstrap capacitor from SW to BTST. |
| CMSRC | 7 | O | Connect to common source of N-channel ACFET and reverse blocking MOSFET (RBFET). Place 4-kΩ resistor from CMSRC pin to the common source of ACFET and RBFET to control the turnon speed. The resistance between ACDRV and CMSRC should be 500-kΩ or bigger. |
| FB | 14 | I | Charge voltage analog feedback adjustment. Connect the output of a resistor divider powered from the battery terminals to FB to AGND. Output voltage is regulated to 2.1 V on FB pin during constant-voltage mode. |

Pin Functions (continued)

| PIN | | TYPE | DESCRIPTION |
|--------|-------|------|---|
| NAME | NO. | | |
| ISET | 13 | I | Fast charge current set point. Use a voltage divider from VREF to ISET to AGND to set the fast charge current: $I_{CHG} = \frac{V_{ISET}}{20 \times R_{SR}}$ The precharge and termination current is internally as one tenth of the charge current. The charger is disabled when ISET pin voltage is below 40 mV and enabled when ISET pin voltage is above 120 mV. |
| OVPSET | 18 | I | Valid input voltage set point. Use a voltage divider from input to OVPSET to AGND to set this voltage. The voltage above internal 1.6-V reference indicates input overvoltage, and the voltage below internal 0.5-V reference indicates input undervoltage. In either condition, charge terminates, and input NMOS pair ACFET/RBFET turn off. LED driven by STAT pin keeps blinking, reporting fault condition. |
| PGND | 22,23 | P | Power ground. Ground connection for high-current power converter node. On PCB layout, connect directly to ground connection of input and output capacitors of the charger. Only connect to AGND through the Thermal Pad underneath the IC. |
| PVCC | 2,3 | P | Charger input voltage. Connect at least 10-μF ceramic capacitor from PVCC to PGND and place it as close as possible to IC. |
| REGN | 20 | P | PWM low-side driver positive 6-V supply output. Connect a 1-μF ceramic capacitor from REGN to PGND pin, close to the IC. Generate high-side driver bootstrap voltage by integrated diode from REGN to BTST. |
| SRN | 15 | I | Charge current sense resistor negative input. A 0.1-μF ceramic capacitor is placed from SRN to SRP to provide differential-mode filtering. A 0.1-μF ceramic capacitor is placed from SRN pin to AGND for common-mode filtering. |
| SRP | 16 | I/P | Charge current sense resistor, positive input. A 0.1-μF ceramic capacitor is placed from SRN to SRP to provide differential-mode filtering. A 0.1-μF ceramic capacitor is placed from SRP pin to AGND for common-mode filtering. |
| STAT | 9 | O | Open-drain charge status pin with 10-kΩ pullup to power rail. The STAT pin can be used to drive LED or communicate with the host processor. It indicates various charger operations: LOW when charge in progress. HIGH when charge is complete or in SLEEP mode. Blinking at 0.5 Hz when fault occurs, including charge suspend, input overvoltage, timer fault and battery absent. |
| SW | 1,24 | P | Switching node, charge current output inductor connection. Connect the 0.047-μF bootstrap capacitor from SW to BTST. |
| TS | 10 | I | Temperature qualification voltage input. Connect a negative temperature coefficient thermistor. Program the hot and cold temperature window with a resistor divider from VREF to TS to AGND. The 103AT thermistor is recommended. |
| TTC | 11 | I | Safety Timer and termination control. Connect a capacitor from this node to AGND to set the fast charge safety timer(5.6 min/nF). Precharge timer is internally fixed to 30 minutes. Pull the TTC to LOW to disable the charge termination and safety timer. Pull the TTC to HIGH to disable the safety timer but allow the charge termination. |
| VREF | 12 | P | 3.3-V reference voltage output. Place a 1-μF ceramic capacitor from VREF to AGND pin close to the IC. This voltage could be used for programming ISET and ACSET and TS pins. |

8 Specifications

8.1 Absolute Maximum Ratings

over operating free-air temperature range (unless otherwise noted) ⁽¹⁾⁽²⁾

| | | MIN | MAX | UNIT |
|---------------------------------------|------------------------------------|------|-----|------|
| Voltage (with respect to AGND) | AVCC, ACP, ACN, ACDRV, CMSRC, STAT | –0.3 | 30 | V |
| | PVCC | –0.3 | 20 | |
| | BATDRV, SRP, SRN | –0.3 | 20 | |
| | SW | –2 | 20 | |
| | FB | –0.3 | 16 | |
| | OVPSET, REGN, TS, TTC | –0.3 | 7 | |
| | VREF, ISET, ACSET | –0.3 | 3.6 | |
| | PGND | –0.3 | 0.3 | |
| Maximum difference voltage | SRP–SRN, ACP–ACN | –0.5 | 0.5 | V |
| Junction temperature, T _J | | –40 | 155 | °C |
| Storage temperature, T _{stg} | | –55 | 155 | °C |

- (1) Stresses beyond those listed under *Absolute Maximum Ratings* may cause permanent damage to the device. These are stress ratings only, and functional operation of the device at these or any other conditions beyond those indicated under *Recommended Operating Conditions* is not implied. Exposure to absolute-maximum-rated conditions for extended periods may affect device reliability.
- (2) All voltages are with respect to GND if not specified. Currents are positive into, negative out of the specified terminal. Consult Packaging Section of the data book for thermal limitations and considerations of packages.

8.2 ESD Ratings

| | | VALUE | UNIT |
|--|--|-------|------|
| V _(ESD) Electrostatic discharge | Human-body model (HBM), per ANSI/ESDA/JEDEC JS-001 ⁽¹⁾ | 1000 | V |
| | Charged-device model (CDM), per JEDEC specification JESD22-C101 ⁽²⁾ | 250 | |

- (1) JEDEC document JEP155 states that 500-V HBM allows safe manufacturing with a standard ESD control process.
- (2) JEDEC document JEP157 states that 250-V CDM allows safe manufacturing with a standard ESD control process.

8.3 Recommended Operating Conditions

| | | MIN | MAX | UNIT |
|--|------------------|------|------|------|
| Input voltage | V _{IN} | 4.5 | 17 | V |
| Output voltage | V _{OUT} | | 13.5 | V |
| Output current (R _{SR} 10 mΩ) | I _{OUT} | 0.6 | 4 | A |
| Maximum difference voltage | ACP - ACN | –200 | 200 | mV |
| | SRP–SRN | –200 | 200 | |
| Operation free-air temperature, T _A | | –40 | 85 | °C |

8.4 Thermal Information

| THERMAL METRIC ⁽¹⁾ | | bq24171 | UNIT |
|-------------------------------|--|------------|------|
| | | RGY [VQFN] | |
| | | 24 PINS | |
| R _{θJA} | Junction-to-ambient thermal resistance | 35.7 | °C/W |
| ψ _{JT} | Junction-to-top characterization parameter | 0.4 | |
| ψ _{JB} | Junction-to-board characterization parameter | 31.2 | |

- (1) For more information about traditional and new thermal metrics, see the *IC Package Thermal Metrics* application report, [SPRA953](#).

8.5 Electrical Characteristics

4.5 V ≤ V(PVCC, AVCC) ≤ 17 V, −40°C < T_J + 125°C, typical values are at T_A = 25°C, with respect to AGND (unless otherwise noted)

| PARAMETER | | TEST CONDITIONS | MIN | TYP | MAX | UNIT |
|----------------------------------|---|---|-------------------|--------------------|-------|------|
| OPERATING CONDITIONS | | | | | | |
| V _{AVCC_OP} | AVCC input voltage operating range during charging | | 4.5 | | 17 | V |
| QUIESCENT CURRENTS | | | | | | |
| I _{BAT} | Battery discharge current (sum of currents into AVCC, PVCC, ACP, ACN) | V _{AVCC} > V _{UVLO} , V _{SRN} > V _{AVCC} (SLEEP), T _J = 0°C to 85°C | | | 15 | μA |
| | | BTST, SW, SRP, SRN, V _{AVCC} > V _{UVLO} , V _{AVCC} > V _{SRN} , ISET < 40 mV, V _{BAT} = 12.6 V, Charge disabled | | | 25 | |
| | | BTST, SW, SRP, SRN, V _{AVCC} > V _{UVLO} , V _{AVCC} > V _{SRN} , ISET > 120 mV, V _{BAT} = 12.6 V, Charge done | | | 25 | |
| I _{AC} | Adapter supply current (sum of current into AVCC,ACP, ACN) | V _{AVCC} > V _{UVLO} , V _{AVCC} > V _{SRN} , ISET < 40 mV, V _{BAT} = 12.6 V, Charge disabled | 1.2 | | 1.5 | mA |
| | | V _{AVCC} > V _{UVLO} , V _{AVCC} > V _{SRN} , ISET > 120 mV, Charge enabled, no switching | 2.5 | | 5 | |
| | | V _{AVCC} > V _{UVLO} , V _{AVCC} > V _{SRN} , ISET > 120 mV, Charge enabled, switching | 15 ⁽¹⁾ | | | |
| CHARGE VOLTAGE REGULATION | | | | | | |
| V _{FB_REG} | Feedback Regulation Voltage | V _{T3} < V _{TS} < V _{T1} | | 2.1 | | V |
| | | V _{T4} < V _{TS} < V _{T3} | | 2.05 | | |
| | | V _{T5} < V _{TS} < V _{T4} | | 2.025 | | |
| | Charge Voltage Regulation Accuracy | T _J = 0 to 85°C | −0.5% | | −0.5% | |
| | | T _J = −40 to 125°C | −0.7% | | −0.7% | |
| I _{VFB} | Leakage Current into FB pin | V _{FB} = 2.1 V, 2.05 V, 2.025 V | | | 100 | nA |
| CURRENT REGULATION – FAST CHARGE | | | | | | |
| V _{ISET} | ISET Voltage Range | R _{SENSE} = 10 mΩ | 0.12 | | 0.8 | V |
| K _{ISET} | Charge Current Set Factor (Amps of Charge Current per Volt on ISET pin) | R _{SENSE} = 10 mΩ | | 5 | | A/V |
| | Charge Current Regulation Accuracy (with Schottky diode on SW) | V _{SRP-SRN} = 40 mV | −4% | | 4% | |
| | | V _{SRP-SRN} = 20 mV | −7% | | 7% | |
| | | V _{SRP-SRN} = 5 mV | −25% | | 25% | |
| V _{ISET_CD} | Charge Disable Threshold | ISET falling | 40 | 50 | | mV |
| V _{ISET_CE} | Charge Enable Threshold | ISET rising | | 100 | 120 | mV |
| I _{ISET} | Leakage Current into ISET | V _{ISET} = 2 V | | | 100 | nA |
| INPUT CURRENT REGULATION | | | | | | |
| K _{DPM} | Input DPM Current Set Factor (Amps of Input Current per Volt on ACSET) | R _{SENSE} = 10 mΩ | | 5 | | A/V |
| | Input DPM Current Regulation Accuracy (with Schottky diode on SW) | V _{ACP-ACN} = 80 mV | −4% | | 4% | |
| | | V _{ACP-ACN} = 40 mV | −9% | | 9% | |
| | | V _{ACP-ACN} = 20 mV | −15% | | 15% | |
| | | V _{ACP-ACN} = 5 mV | −20% | | 20% | |
| | | V _{ACP-ACN} = 2.5 mV | −40% | | 40% | |
| I _{ACSET} | Leakage Current into ACSET pin | V _{ACSET} = 2 V | | | 100 | nA |
| CURRENT REGULATION – PRECHARGE | | | | | | |
| K _{IPRECHG} | Precharge current set factor | Percentage of fast charge current | | 10% ⁽²⁾ | | |
| | Precharge current regulation accuracy | V _{SRP-SRN} = 4 mV | −25% | | 25% | |
| | | V _{SRP-SRN} = 2 mV | −40% | | 40% | |

(1) Specified by design.

(2) The minimum current is 120 mA on 10-mΩ sense resistor.

Electrical Characteristics (continued)

4.5 V ≤ V(PVCC, AVCC) ≤ 17 V, −40°C < T_J + 125°C, typical values are at T_A = 25°C, with respect to AGND (unless otherwise noted)

| PARAMETER | | TEST CONDITIONS | MIN | TYP | MAX | UNIT |
|--|---|---|------|--------------------|------|------|
| CHARGE TERMINATION | | | | | | |
| K _{TERM} | Termination current set factor | Percentage of fast charge current | | 10% ⁽²⁾ | | |
| | Termination current regulation accuracy | V _{SRP-SRN} = 4 mV | −25% | | 25% | |
| | | V _{SRP-SRN} = 2 mV | −40% | | 40% | |
| t _{TERM_DEG} | Deglitch time for termination (both edges) | | | 100 | | ms |
| t _{QUAL} | Termination qualification time | V _{SRN} > V _{RECH} and I _{CHG} < I _{TERM} | | 250 | | ms |
| I _{QUAL} | Termination qualification current | Discharge current once termination is detected | | 2 | | mA |
| INPUT UNDERVOLTAGE LOCKOUT COMPARATOR (UVLO) | | | | | | |
| V _{UVLO} | AC undervoltage rising threshold | Measure on AVCC | 3.4 | 3.6 | 3.8 | V |
| V _{UVLO_HYS} | AC undervoltage hysteresis, falling | Measure on AVCC | | 300 | | mV |
| SLEEP COMPARATOR (REVERSE DISCHARGING PROTECTION) | | | | | | |
| V _{SLEEP} | SLEEP mode threshold | V _{AVCC} − V _{SRN} falling | 50 | 90 | 150 | mV |
| V _{SLEEP_HYS} | SLEEP mode hysteresis | V _{AVCC} − V _{SRN} rising | | 200 | | mV |
| t _{SLEEP_FALL_CD} | SLEEP deglitch to disable charge | V _{AVCC} − V _{SRN} falling | | 1 | | ms |
| t _{SLEEP_FALL_FETOFF} | SLEEP deglitch to turn off input FETs | V _{AVCC} − V _{SRN} falling | | 5 | | ms |
| t _{SLEEP_FALL} | Deglitch to enter SLEEP mode, disable VREF and enter low quiescent mode | V _{AVCC} − V _{SRN} falling | | 100 | | ms |
| t _{SLEEP_PWRUP} | Deglitch to exit SLEEP mode, and enable VREF | V _{AVCC} − V _{SRN} rising | | 30 | | ms |
| ACN-SRN COMPARATOR | | | | | | |
| V _{ACN-SRN} | Threshold to turn on BATFET | V _{ACN-SRN} falling | 150 | 220 | 300 | mV |
| V _{ACN-SRN_HYS} | Hysteresis to turn off BATFET | V _{ACN-SRN} rising | | 100 | | mV |
| t _{BATFETOFF_DEG} | Deglitch to turn on BATFET | V _{ACN-SRN} falling | | 2 | | ms |
| t _{BATFETON_DEG} | Deglitch to turn off BATFET | V _{ACN-SRN} rising | | 50 | | μs |
| BAT LOWV COMPARATOR | | | | | | |
| V _{LOWV} | Precharge to fast charge transition | Measure on FB | 1.43 | 1.45 | 1.47 | V |
| V _{LOWV_HYS} | Fast charge to precharge hysteresis | Measure on FB | | 100 | | mV |
| t _{pre2fas} | V _{LOWV} rising deglitch | Delay to start fast charge current | | 25 | | ms |
| t _{fast2pre} | V _{LOWV} falling deglitch | Delay to start precharge current | | 25 | | ms |
| RECHARGE COMPARATOR | | | | | | |
| V _{RECHG} | Recharge Threshold, below regulation voltage limit, V _{FB_REG} − V _{FB} | Measure on FB | 35 | 50 | 65 | mV |
| t _{RECH_RISE_DEG} | V _{RECHG} rising deglitch | V _{FB} decreasing below V _{RECHG} | | 10 | | ms |
| t _{RECH_FALL_DEG} | V _{RECHG} falling deglitch | V _{FB} increasing above V _{RECHG} | | 10 | | ms |
| BAT OVERVOLTAGE COMPARATOR | | | | | | |
| V _{OV_RISE} | Overvoltage rising threshold | As percentage of V _{FB_REG} | | 104% | | |
| V _{OV_FALL} | Overvoltage falling threshold | As percentage of V _{FB_REG} | | 102% | | |

Electrical Characteristics (continued)

4.5 V ≤ V(PVCC, AVCC) ≤ 17 V, −40°C < T_J + 125°C, typical values are at T_A = 25°C, with respect to AGND (unless otherwise noted)

| PARAMETER | | TEST CONDITIONS | MIN | TYP | MAX | UNIT |
|---|--|--|-------|-------------------------|-------|------|
| INPUT OVERVOLTAGE COMPARATOR (ACOV) | | | | | | |
| V _{ACOV} | AC Overvoltage Rising Threshold to turn off ACFET | OVPSET rising | 1.57 | 1.6 | 1.63 | V |
| V _{ACOV_HYS} | AC overvoltage falling hysteresis | OVPSET falling | | 50 | | mV |
| t _{ACOV_RISE_DEG} | AC Overvoltage Rising Deglitch to turn off ACFET and Disable Charge | OVPSET rising | | 1 | | μs |
| t _{ACOV_FALL_DEG} | AC Overvoltage Falling Deglitch to turn on ACFET | OVPSET falling | | 30 | | ms |
| INPUT UNDERVOLTAGE COMPARATOR (ACUV) | | | | | | |
| V _{ACUV} | AC Undervoltage Falling Threshold to turn off ACFET | OVPSET falling | 0.487 | 0.497 | 0.507 | V |
| V _{ACUV_HYS} | AC Undervoltage Rising Hysteresis | OVPSET rising | | 100 | | mV |
| t _{ACOV_FALL_DEG} | AC Undervoltage Falling Deglitch to turn off ACFET and Disable Charge | OVPSET falling | | 1 | | μs |
| t _{ACOV_RISE_DEG} | AC Undervoltage Rising Deglitch to turn on ACFET | OVPSET rising | | 30 | | ms |
| THERMAL REGULATION | | | | | | |
| T _{J_REG} | Junction Temperature Regulation Accuracy | ISET > 120 mV, Charging | | 120 | | °C |
| THERMAL SHUTDOWN COMPARATOR | | | | | | |
| T _{SHUT} | Thermal shutdown rising temperature | Temperature rising | | 150 | | °C |
| T _{SHUT_HYS} | Thermal shutdown hysteresis | Temperature falling | | 20 | | °C |
| t _{SHUT_RISE_DEG} | Thermal shutdown rising deglitch | Temperature rising | | 100 | | μs |
| t _{SHUT_FALL_DEG} | Thermal shutdown falling deglitch | Temperature falling | | 10 | | ms |
| THERMISTOR COMPARATOR | | | | | | |
| V _{T1} | T1 (0 °C) threshold, Charge suspended below this temperature. | V _{TS} rising, As Percentage to V _{VREF} | 70.2% | 70.8% | 71.4% | |
| V _{T1-HYS} | Charge back to I _{CHARGE} / 2 and V _{FB} = 2.1 V above this temperature. | Hysteresis, V _{TS} falling | | 0.6% | | |
| V _{T2} | T2 (10 °C) threshold, Charge back to I _{CHARGE} / 2 and V _{FB} = 2.1 V below this temperature. | V _{TS} rising, As Percentage to V _{VREF} | 68.0% | 68.6% | 69.2% | |
| V _{T2-HYS} | Charge back to I _{CHARGE} and V _{FB} = 2.1 V above this temperature. | Hysteresis, V _{TS} falling | | 0.8% | | |
| V _{T3} | T3 (45 °C) threshold, Charge back to I _{CHARGE} and V _{FB} = 2.05 V above this temperature. | V _{TS} falling, As Percentage to V _{VREF} | 55.5% | 56.1% | 56.7% | |
| V _{T3-HYS} | Charge back to I _{CHARGE} and V _{FB} = 2.1 V below this temperature. | Hysteresis, V _{TS} rising | | 0.8% | | |
| V _{T4} | T4 (50 °C) threshold, Charge back to I _{CHARGE} and V _{FB} = 2.025 V above this temperature. | V _{TS} falling, As Percentage to V _{VREF} | 53.2% | 53.7% | 54.2% | |
| V _{T4-HYS} | Charge back to I _{CHARGE} and V _{FB} = 2.05 V below this temperature. | Hysteresis, V _{TS} rising | | 0.8% | | |
| V _{T5} | T5 (60 °C) threshold, Charge suspended above this temperature. | V _{TS} falling, As Percentage to V _{VREF} | 47.6% | 48.1% | 48.6% | |
| V _{T5-HYS} | Charge back to I _{CHARGE} and V _{FB} = 2.025 V below this temperature. | Hysteresis, V _{TS} rising | | 1.2% | | |
| | Deglitch time for Temperature Out of Valid Charge Range Detection | V _{TS} < V _{T5} or V _{TS} > V _{T1} | | 400 | | ms |
| | Deglitch time for Temperature In Valid Range Detection | V _{TS} > V _{T5} + V _{T5-HYS} or V _{TS} < V _{T1} - V _{T1-HYS} | | 20 | | |
| | Deglitch time for Temperature Detection above/below T2, T3, T4 threshold | | | 25 | | ms |
| | Charge Current when V _{TS} between V _{T1} and V _{T2} range | | | I _{CHARGE} / 2 | | |

Electrical Characteristics (continued)

4.5 V ≤ V(PVCC, AVCC) ≤ 17 V, −40°C < T_J + 125°C, typical values are at T_A = 25°C, with respect to AGND (unless otherwise noted)

| PARAMETER | | TEST CONDITIONS | MIN | TYP | MAX | UNIT |
|--|--|--|-------|--------------------|-------|--------|
| CHARGE OVERCURRENT COMPARATOR (CYCLE-BY-CYCLE) | | | | | | |
| V _{OC_P_CHRG} | Charge Overcurrent Rising Threshold, V _{SRP} > 2.2 V | Current as percentage of fast charge current | | 160% | | |
| V _{OC_P_MIN} | Charge Overcurrent Limit Min, V _{SRP} < 2.2 V | Measure V _{SRP-SRN} | | 45 | | mV |
| V _{OC_P_MAX} | Charge Overcurrent Limit Max, V _{SRP} > 2.2 V | Measure V _{SRP-SRN} | | 75 | | mV |
| HSFET OVERCURRENT COMPARATOR (CYCLE-BY-CYCLE) | | | | | | |
| I _{OC_P_HSFET} | Current limit on HSFET | Measure on HSFET | 8 | 11.5 | | A |
| CHARGE UNDERCURRENT COMPARATOR (CYCLE-BY-CYCLE) | | | | | | |
| V _{UC_P} | Charge undercurrent falling threshold | Measure on V _(SRP-SRN) | 1 | 5 | 9 | mV |
| BAT SHORT COMPARATOR | | | | | | |
| V _{BAT_{SH}T} | Battery short falling threshold | Measure on SRN | | 2 | | V |
| V _{BAT_{SH}T_HYS} | Battery short rising hysteresis | Measure on SRN | | 200 | | mV |
| t _{BAT_{SH}T_DEG} | Deglintch on both edges | | | 1 | | μs |
| V _{BAT_{SH}T} | Charge Current during BATSHORT | Percentage of fast charge current | | 10% ⁽²⁾ | | |
| VREF REGULATOR | | | | | | |
| V _{VREF_REG} | VREF regulator voltage | V _{AVCC} > V _{UVLO} , No load | 3.267 | 3.3 | 3.333 | V |
| I _{VREF_LIM} | VREF current limit | V _{VREF} = 0 V, V _{AVCC} > V _{UVLO} | 35 | | 90 | mA |
| REGN REGULATOR | | | | | | |
| V _{REGN_REG} | REGN regulator voltage | V _{AVCC} > 10 V, ISET > 120 mV | 5.7 | 6 | 6.3 | V |
| I _{REGN_LIM} | REGN current limit | V _{REGN} = 0 V, V _{AVCC} > 10 V, ISET > 120 mV | 40 | | 120 | mA |
| TTC INPUT | | | | | | |
| t _{prechg} | Precharge Safety Timer | Precharge time before fault occurs | 1620 | 1800 | 1980 | Sec |
| t _{fastchg} | Fast Charge Timer Range | T _{chg} = C _{TTC} * K _{TTC} | 1 | | 10 | hr |
| | Fast Charge Timer Accuracy | | −10% | | 10% | |
| K _{TTC} | Timer Multiplier | | | 5.6 | | min/nF |
| V _{TTC_LOW} | TTC Low Threshold | TTC falling | | | 0.4 | V |
| I _{TTC} | TTC Source/Sink Current | | 45 | 50 | 55 | μA |
| V _{TTC_OSC_HI} | TTC oscillator high threshold | | | 1.5 | | V |
| V _{TTC_OSC_LO} | TTC oscillator low threshold | | | 1 | | V |
| BATTERY SWITCH (BATFET) DRIVER | | | | | | |
| R _{DS_BAT_OFF} | BATFET Turnoff Resistance | V _{AVCC} > 5 V | | | 100 | Ω |
| R _{DS_BAT_ON} | BATFET Turnon Resistance | V _{AVCC} > 5 V | | | 20 | kΩ |
| V _{BATDRV_REG} | BATFET Drive Voltage | V _{BATDRV_REG} = V _{ACN} - V _{BATDRV} when V _{AVCC} > 5 V and BATFET is on | 4.2 | | 7 | V |
| t _{BATFET_DEG} | BATFET Power-up Delay to turn off BATFET after adapter is detected | | | 30 | | ms |
| AC SWITCH (ACFET) DRIVER | | | | | | |
| I _{ACFET} | ACDRV Charge Pump Current Limit | V _{ACDRV} - V _{CMSRC} = 5 V | | 60 | | μA |
| V _{ACDRV_REG} | Gate Drive Voltage on ACFET | V _{ACDRV} - V _{CMSRC} when V _{AVCC} > V _{UVLO} | 4.2 | 6 | | V |
| R _{ACDRV_LOAD} | Maximum load between ACDRV and CMSRC | | 500 | | | kΩ |
| AC/BAT SWITCH DRIVER TIMING | | | | | | |
| t _{DRV_DEAD} | Driver Dead Time | Dead Time when switching between ACFET and BATFET | | 10 | | μs |

Electrical Characteristics (continued)

4.5 V ≤ V(PVCC, AVCC) ≤ 17 V, −40°C < T_J + 125°C, typical values are at T_A = 25°C, with respect to AGND (unless otherwise noted)

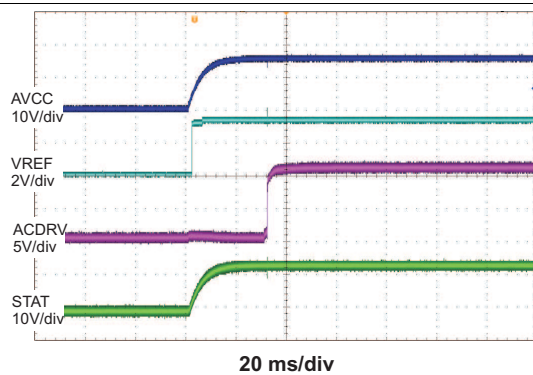
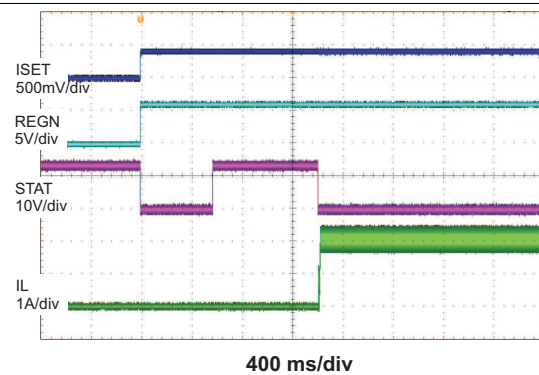
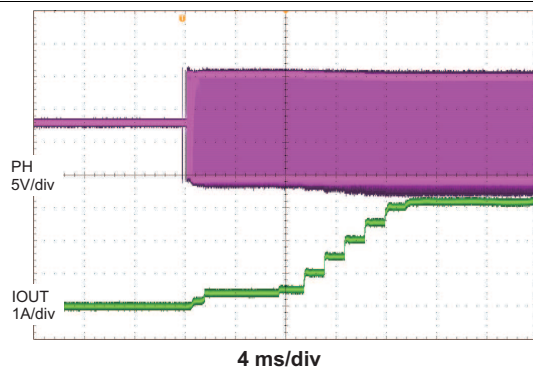
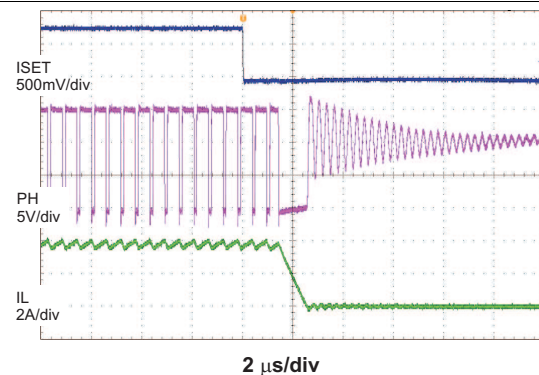
| PARAMETER | | TEST CONDITIONS | MIN | TYP | MAX | UNIT |
|--|--|---|------|------|------|------|
| BATTERY DETECTION | | | | | | |
| t _{WAKE} | Wake timer | Max time charge is enabled | | 500 | | ms |
| I _{WAKE} | Wake current | R _{SENSE} = 10 mΩ | 50 | 125 | 200 | mA |
| t _{DISCHARGE} | Discharge timer | Max time discharge current is applied | | 1 | | sec |
| I _{DISCHARGE} | Discharge current | | | 8 | | mA |
| I _{FAULT} | Fault current after a time-out fault | | | 2 | | mA |
| V _{WAKE} | Wake threshold with respect to V _{REG} To detect battery absent during WAKE | Measure on FB | | 50 | | mV |
| V _{DISCH} | Discharge Threshold to detect battery absent during discharge | Measure on FB | | 1.45 | | V |
| INTERNAL PWM | | | | | | |
| f _{sw} | PWM Switching Frequency | | 1360 | 1600 | 1840 | kHz |
| t _{SW_DEAD} | Driver Dead Time ⁽¹⁾ | Dead time when switching between LSFET and HSFET no load | | 30 | | ns |
| R _{DS_HI} | High-Side MOSFET ON-Resistance | V _{BTST} – V _{SW} = 4.5 V | | 25 | 45 | mΩ |
| R _{DS_LO} | Low-Side MOSFET ON-Resistance | | | 60 | 110 | mΩ |
| V _{BTST_REFRESH} | Bootstrap Refresh Comparator Threshold Voltage | V _{BTST} – V _{SW} when low-side refresh pulse is requested, V _{AVCC} = 4.5 V | 3 | | | V |
| | | V _{BTST} – V _{SW} when low-side refresh pulse is requested, V _{AVCC} > 6 V | 4 | | | |
| INTERNAL SOFT START (8 steps to regulation current ICHG) | | | | | | |
| SS_STEP | Soft start steps | | | 8 | | step |
| T _{SS_STEP} | Soft start step time | | | 1.6 | 3 | ms |
| CHARGER SECTION POWER-UP SEQUENCING | | | | | | |
| t _{CE_DELAY} | Delay from ISET above 120 mV to start charging battery | | | 1.5 | | s |
| INTEGRATED BTST DIODE | | | | | | |
| V _F | Forward Bias Voltage | I _F = 120 mA at 25°C | | 0.85 | | V |
| V _R | Reverse breakdown voltage | I _R = 2 μA at 25°C | | | 20 | V |
| LOGIC IO PIN CHARACTERISTICS | | | | | | |
| V _{OUT_LO} | STAT Output Low Saturation Voltage | Sink Current = 5 mA | | | 0.5 | V |

8.6 Typical Characteristics

Table 1. Table of Graphs⁽¹⁾

| FIGURE | DESCRIPTION |
|---------------------------|---|
| Figure 1 | AVCC, VREF, ACDRV and STAT Power Up (ISET=0) |
| Figure 2 | Charge Enable by ISET |
| Figure 3 | Current Soft Start |
| Figure 4 | Charge Disable by ISET |
| Figure 5 | Continuous Conduction Mode Switching |
| Figure 6 | Discontinuous Conduction Mode Switching |
| Figure 7 | BATFET to ACFET Transition during Power Up |
| Figure 8 | System Load Transient (Input Current DPM) |
| Figure 9 | Battery Insertion and Removal |
| Figure 10 | Battery-to-Ground Short Protection |
| Figure 11 | Battery-to-Ground Short Transition |
| Figure 12 | Efficiency vs Output Current ($V_{IN} = 15\text{ V}$) |
| Figure 13 | Efficiency vs Output Current ($V_{OUT} = 3.8\text{ V}$) |

(1) All waveforms and data are measured on HPA610 and HPA706 EVMs.


Figure 1. Power Up (ISET = 0)

Figure 2. Charge Enable by ISET

Figure 3. Current Soft Start

Figure 4. Charge Disable by ISET

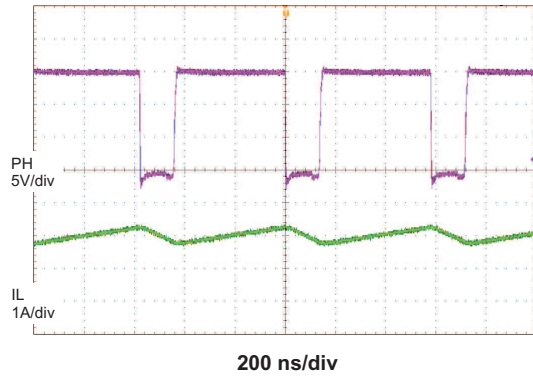


Figure 5. Continuous Conduction Mode Switching

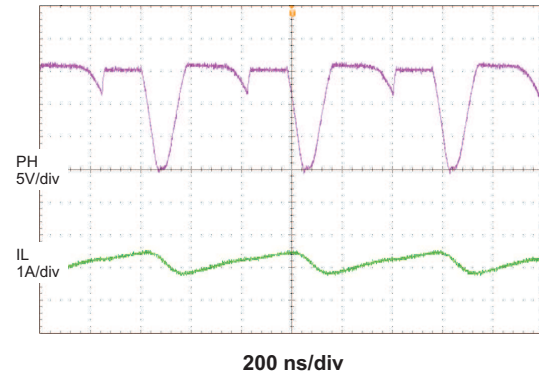


Figure 6. Discontinuous Conduction Mode Switching

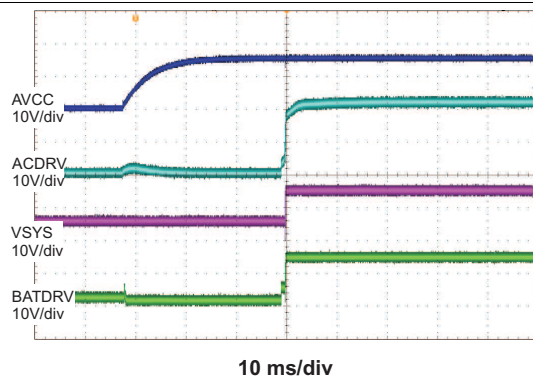


Figure 7. BATFET to ACFET Transition During Power Up

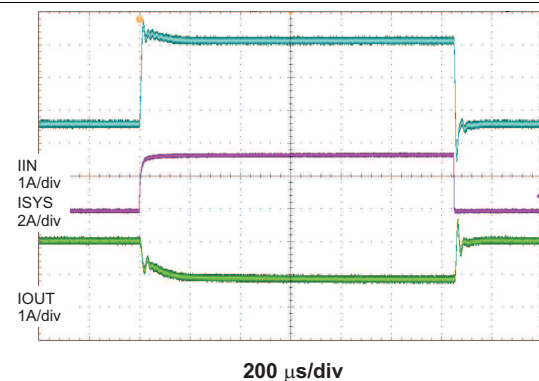


Figure 8. System Load Transient (Input Current DPM)

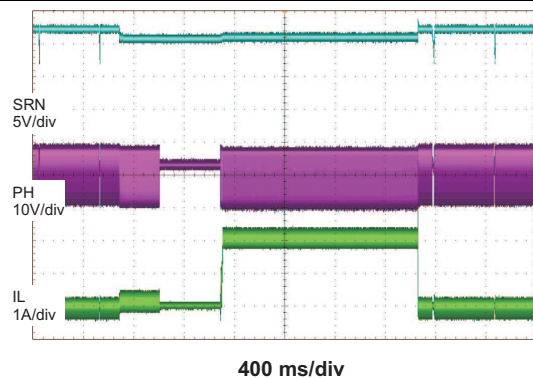


Figure 9. Battery Insertion and Removal

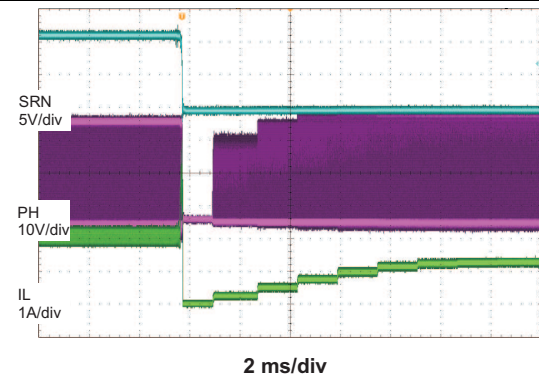


Figure 10. Battery-to-Ground Short Protection

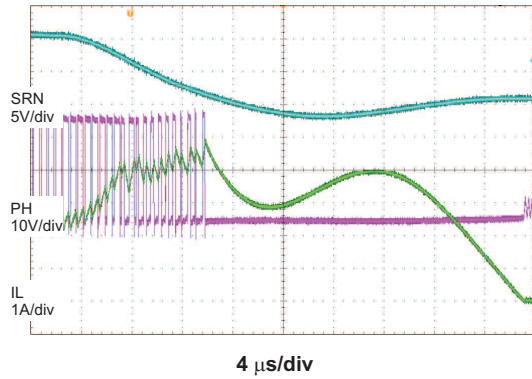


Figure 11. Battery-to-Ground Short Transition

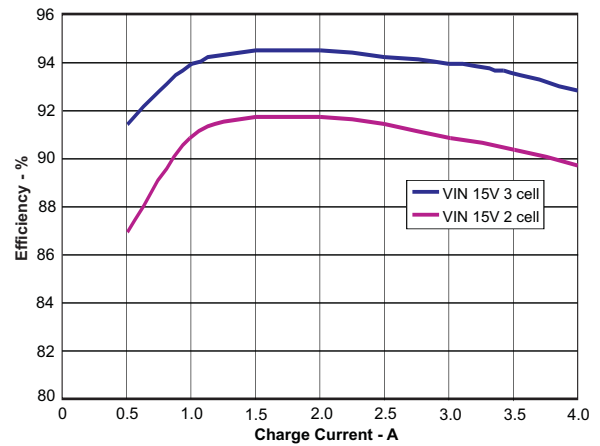


Figure 12. Efficiency vs Output Current ($V_{IN} = 15\text{ V}$)

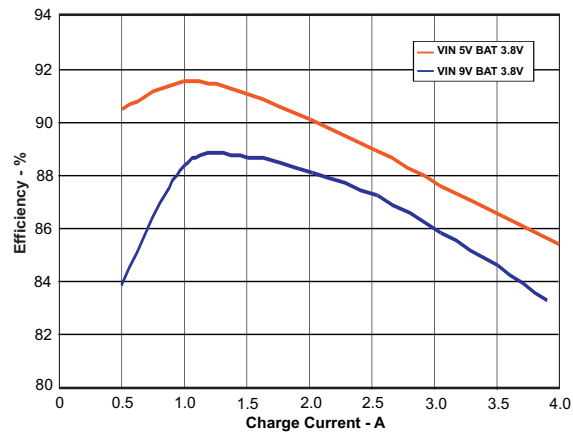


Figure 13. Efficiency vs Output Current ($V_{OUT} = 3.8\text{ V}$)

9.3 Feature Description

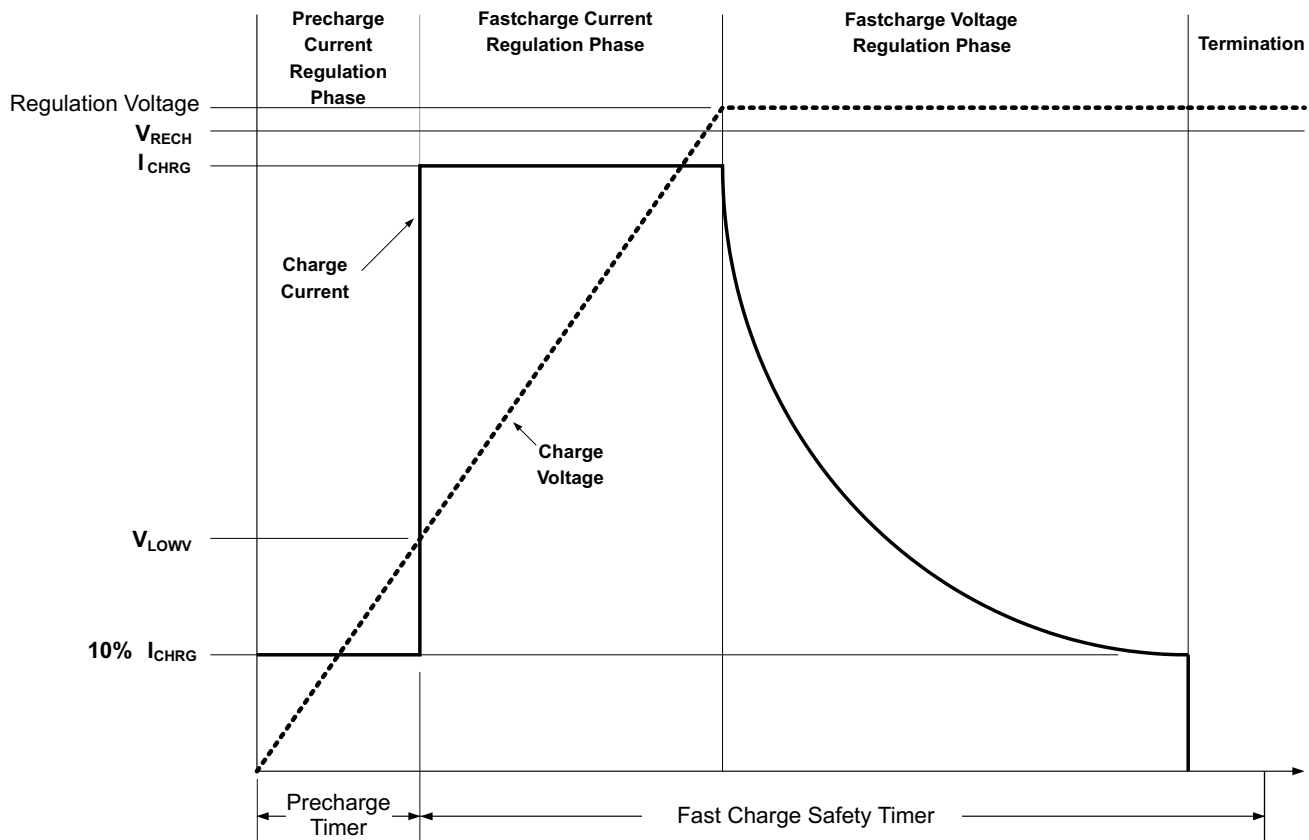


Figure 14. Typical Charging Profile

9.3.1 Battery Voltage Regulation

The bq24171 offers a high-accuracy voltage regulator on for the charging voltage.

The bq24171 uses external resistor divider for voltage feedback and regulate to internal 2.1-V voltage reference on FB pin. Use the following equation for the regulation voltage for bq24171:

$$V_{BAT} = 2.1 \text{ V} \times \left[1 + \frac{R2}{R1} \right]$$

where

- R2 is connected from FB to the battery.
- R1 is connected from FB to GND.

(1)

9.3.2 Battery Current Regulation

The ISET input sets the maximum charging current. Battery current is sensed by current-sensing resistor RSR connected between SRP and SRN. The full-scale differential voltage between SRP and SRN is 40 mV maximum. The equation for charge current is:

$$I_{CHARGE} = \frac{V_{ISET}}{20 \times R_{SR}} \quad (2)$$

The valid input voltage range of ISET is up to 0.8 V. With 10-mΩ sense resistor, the maximum output current is 4 A. With 20-mΩ sense resistor, the maximum output current is 2 A.

The charger is disabled when ISET pin voltage is below 40 mV and is enabled when the ISET pin voltage is above 120 mV. For 10-mΩ current-sensing resistor, the minimum fast charge current must be higher than 600 mA.

Feature Description (continued)

Under high ambient temperature, the charge current will fold back to keep IC temperature not exceeding 120°C.

9.3.3 Battery Precharge Current Regulation

On power up, if the battery voltage is below the V_{LOWV} threshold, the bq24171 applies the precharge current to the battery. This precharge feature is intended to revive deeply discharged cells. If the V_{LOWV} threshold is not reached within 30 minutes of initiating precharge, the charger turns off and a FAULT is indicated on the status pins.

For bq24171, the precharge current is set as 10% of the fast charge rate set by ISET voltage.

$$I_{PRECHARGE} = \frac{V_{ISET}}{200 \times R_{SR}} \quad (3)$$

9.3.4 Input Current Regulation

The total input current from an AC adapter or other DC sources is a function of the system supply current and the battery charging current. System current normally fluctuates as portions of the systems are powered up or down. Without Dynamic Power Management (DPM), the source must be able to supply the maximum system current and the maximum available charger input current simultaneously. By using DPM, the input current regulator reduces the charging current when the summation of system power and charge power exceeds the maximum input power. Therefore, the current capability of the AC adapter can be lowered, reducing system cost.

Input current is set by the voltage on ACSET pin using the following equation:

$$I_{DPM} = \frac{V_{ACSET}}{20 \times R_{AC}} \quad (4)$$

The ACP and ACN pins are used to sense across RAC with default value of 10 mΩ. However, resistors of other values can also be used. A larger sense resistor will give a larger sense voltage and higher regulation accuracy, at the expense of higher conduction loss.

9.3.5 Charge Termination, Recharge, and Safety Timers

The charger monitors the charging current during the voltage regulation phase. Termination is detected when the FB voltage is higher than recharge threshold and the charge current is less than the termination current threshold, as calculated below:

$$I_{TERM} = \frac{V_{ISET}}{200 \times R_{SR}}$$

where

- V_{ISET} is the voltage on the ISET pin.
 - R_{SR} is the sense resistor.
- (5)

There is a 25-ms deglitch time during transition between fast charge and precharge.

As a safety backup, the charger also provides an internal fixed 30-minute precharge safety timer and a programmable fast charge timer. The fast charge time is programmed by the capacitor connected between the TTC pin and AGND, and is given by the formula:

$$t_{TTC} = C_{TTC} \times K_{TTC}$$

where

- C_{TTC} is the capacitor connected to TTC.
 - K_{TTC} is the constant multiplier.
- (6)

A new charge cycle is initiated when one of the following conditions occurs:

- The battery voltage falls below the recharge threshold
- A power-on-reset (POR) event occurs
- ISET pin toggled below 40 mV (disable charge) and above 120 mV (enable charge)

Feature Description (continued)

Pull the TTC pin to AGND to disable both termination and fast charge safety timer (reset timer). Pull the TTC pin to VREF to disable the safety timer, but allow charge termination.

9.3.6 Power Up

The charge uses a SLEEP comparator to determine the source of power on the AVCC pin because AVCC can be supplied either from the battery or the adapter. With the adapter source present, if the AVCC voltage is greater than the SRN voltage, the charger exits SLEEP mode. If all conditions are met for charging, the charger then starts charge the battery (see [Enable and Disable Charging](#)). If SRN voltage is greater than AVCC, the charger enters low quiescent current SLEEP mode to minimize current drain from the battery. During SLEEP mode, the VREF output turns off and the STAT pin goes to high impedance.

If AVCC is below the UVLO threshold, the device is disabled.

9.3.7 Input Undervoltage Lockout (UVLO)

The system must have a minimum AVCC voltage to allow proper operation. This AVCC voltage could come from either input adapter or battery because a conduction path exists from the battery to AVCC through the high-side NMOS body diode. When AVCC is below the UVLO threshold, all circuits on the IC are disabled.

9.3.8 Input Overvoltage/Undervoltage Protection

ACOV provides protection to prevent system damage due to high input voltage. In bq24171, once the voltage on OVPSET is above the 1.6-V ACOV threshold or below the 0.5-V ACUV threshold, charge is disabled and input MOSFETs turn off. The bq24171 provides flexibility to set the input qualification threshold.

9.3.9 Enable and Disable Charging

The following conditions have to be valid before charging is enabled:

- ISET pin above 120 mV.
- Device is not in UVLO mode (that is, $V_{AVCC} > V_{UVLO}$).
- Device is not in SLEEP mode (that is, $V_{AVCC} > V_{SRN}$).
- OVPSET voltage is from 0.5 V to 1.6 V to qualify the adapter.
- 1.5-s delay is complete after initial power up.
- REGN LDO and VREF LDO voltages are at correct levels.
- Thermal Shutdown (TSHUT) is not valid.
- TS fault is not detected.
- ACFET turns on (see [System Power Selector](#) for details).

One of the following conditions stops ongoing charging:

- ISET pin voltage is below 40 mV.
- Device is in UVLO mode.
- Adapter is removed, causing the device to enter SLEEP mode.
- OVPSET voltage indicates the adapter is not valid.
- REGN or VREF LDO voltage is overloaded.
- TSHUT temperature threshold is reached.
- TS voltage goes out of range, indicating the battery temperature is too hot or too cold.
- ACFET turns off.
- TTC timer expires or precharge timer expires.

9.3.10 System Power Selector

The IC automatically switches adapter or battery power to the system load. The battery is connected to the system by default during power up or during SLEEP mode. When the adapter plugs in and the voltage is above the battery voltage, the IC exits SLEEP mode. The battery is disconnected from the system and the adapter is connected to the system after exiting SLEEP. An automatic break-before-make logic prevents shoot-through currents when the selectors switch.

Feature Description (continued)

The ACDRV is used to drive a pair of back-to-back N-channel power MOSFETs between adapter and ACP with sources connected together to CMSRC. The N-channel FET with the drain connected to the ACP (Q2, RBFET) provides reverse battery discharge protection, and minimizes system power dissipation with its low-RDS_{ON}. The other N-channel FET with drain connected to adapter input (Q1, ACFET) separates battery from adapter, and provides a limited dI/dt when connecting the adapter to the system by controlling the FET turnon time. The /BATDRV controls a P-channel power MOSFET (Q3, BATFET) placed between battery and system with drain connected to battery.

Before the adapter is detected, the ACDRV is pulled to CMSRC to keep ACFET off, disconnecting the adapter from system. /BATDRV stays at ACN - 6 V (clamp to ground) to connect battery to system if all the following conditions are valid:

- $V_{AVCC} > V_{UVLO}$ (battery supplies AVCC)
- $V_{ACN} < V_{SRN} + 200 \text{ mV}$

After the device comes out of SLEEP mode, the system begins to switch from battery to adapter. The AVCC voltage has to be 300 mV above SRN to enable the transition. The break-before-make logic keeps both ACFET and BATFET off for 10 μs before ACFET turns on. This prevents shoot-through current or any large discharging current from going into the battery. The /BATDRV is pulled up to ACN and the ACDRV pin is set to CMSRC + 6 V by an internal charge pump to turn on N-channel ACFET, connecting the adapter to the system if all the following conditions are valid:

- $V_{ACUV} < V_{OVPSET} < V_{ACOV}$
- $V_{AVCC} > V_{SRN} + 300 \text{ mV}$

When the adapter is removed, the IC turns off ACFET and enters SLEEP mode.

BATFET keeps off until the system drops close to SRN. The $\overline{\text{BATDRV}}$ pin is driven to ACN - 6 V by an internal regulator to turn on P-channel BATFET, connecting the battery to the system.

Asymmetrical gate drive provides fast turnoff and slow turnon of the ACFET and BATFET to help the break-before-make logic and to allow a soft-start at turnon of both MOSFETs. The delay time can be further increased by putting a capacitor from gate to source of the power MOSFETs.

9.3.11 Converter Operation

The bq24171 employs a 1.6-MHz constant-frequency step-down switching regulator. The fixed-frequency oscillator keeps tight control of the switching frequency under all conditions of input voltage, battery voltage, charge current, and temperature, simplifying output filter design and keeping it out of the audible noise region.

A type III compensation network allows using ceramic capacitors at the output of the converter. An internal sawtooth ramp is compared to the internal error control signal to vary the duty cycle of the converter. The ramp height is proportional to the AVCC voltage to cancel out any loop gain variation due to a change in input voltage, and simplifies the loop compensation. Internal gate drive logic allows achieving 97% duty cycle before pulse skipping starts.

9.3.12 Automatic Internal Soft-Start Charger Current

The charger automatically soft-starts the charger regulation current every time the charger goes into fast charge to ensure there is no overshoot or stress on the output capacitors or the power converter. The soft-start consists of stepping-up the charge regulation current into eight evenly divided steps up to the programmed charge current. Each step lasts around 1.6 ms, for a typical rise time of 12.8 ms. No external components are needed for this function.

9.3.13 Charge Overcurrent Protection

The charger monitors top-side MOSFET current by high-side sense FET. When peak current exceeds MOSFET limit, the charger turns off the top-side MOSFET and keeps it off until the next cycle. The charger has a secondary cycle-to-cycle overcurrent protection. The charger monitors the charge current, and prevents the current from exceeding 160% of the programmed charge current. The high-side gate drive turns off when either overcurrent condition is detected, and automatically resumes when the current falls below the overcurrent threshold.

Feature Description (continued)

9.3.14 Charge Undercurrent Protection

After the recharge, if the SRP-SRN voltage decreases below 5 mV, then the low-side FET is turned off for the rest of the switching cycle. During discontinuous conduction mode (DCM), the low-side FET turns on for a short period of time when the bootstrap capacitor voltage drops below 4 V to provide refresh charge for the capacitor. This is important to prevent negative inductor current from causing any boost effect in which the input voltage increases as power is transferred from the battery to the input capacitors. This can lead to an overvoltage on the AVCC node and potentially cause damage to the system.

9.3.15 Battery Detection

For applications with removable battery packs, IC provides a battery absent detection scheme to reliably detect insertion or removal of battery packs. The battery detection routine runs on power up, or if battery voltage falls below recharge threshold voltage due to removing a battery or discharging a battery.

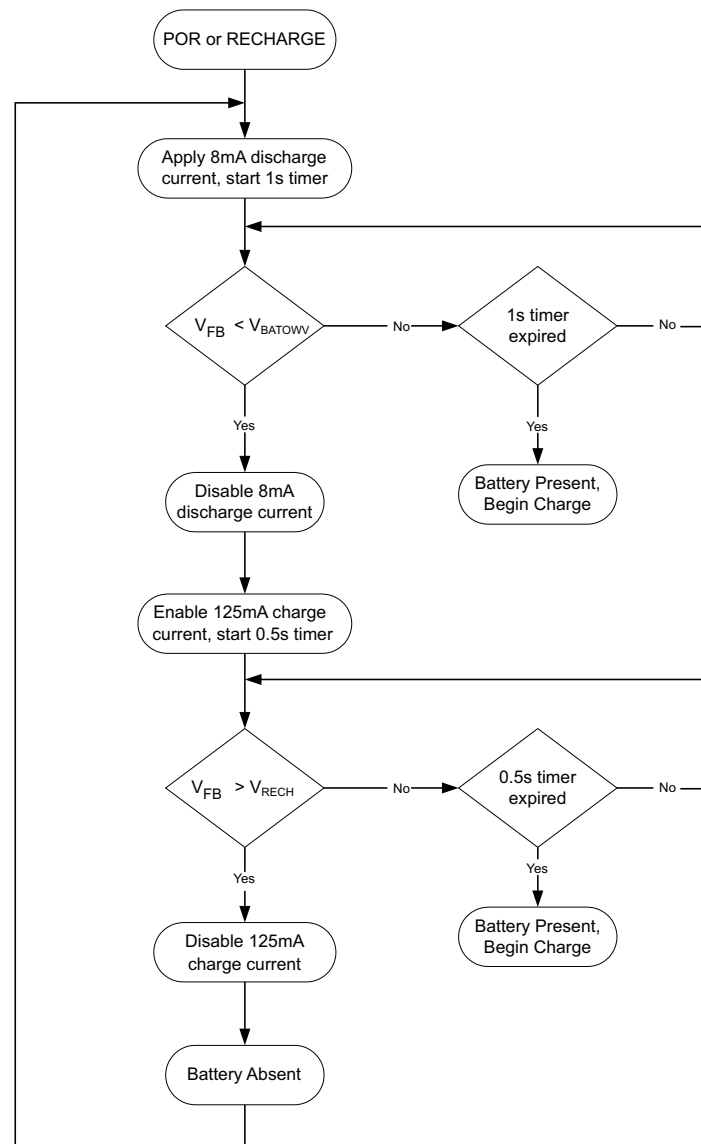


Figure 15. Battery Detection Flow Chart

Feature Description (continued)

Once the device has powered up, an 8-mA discharge current is applied to the SRN terminal. If the battery voltage falls below the LOWV threshold within 1 second, the discharge source is turned off, and the charger is turned on at low charge current (125 mA). If the battery voltage gets up above the recharge threshold within 500 ms, there is no battery present and the cycle restarts. If either the 500-ms or 1-second timer times out before the respective thresholds are hit, a battery is detected and a charge cycle is initiated.

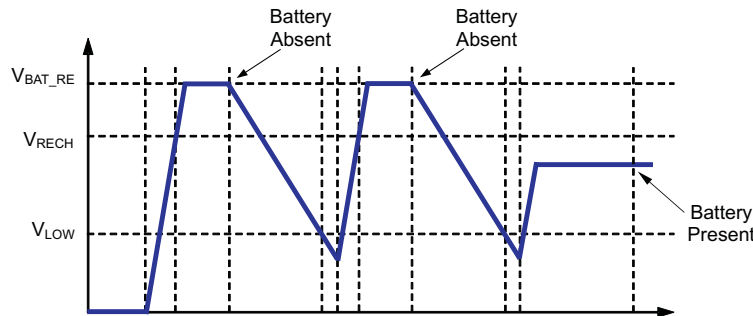


Figure 16. Battery Detect Timing Diagram

Ensure that the total output capacitance at the battery node is not so large that the discharge current source cannot pull the voltage below the LOWV threshold during the 1-second discharge time. The maximum output capacitances can be calculated according to the following equation:

$$C_{MAX} = \frac{I_{DISCH} \times t_{DISCH}}{(2.05 \text{ V} - 1.45 \text{ V}) \times \left[1 + \frac{R_2}{R_1} \right]}$$

where

- C_{MAX} is the maximum output capacitance.
- I_{DISCH} is the discharge current.
- t_{DISCH} is the discharge time.
- R_2 and R_1 are the voltage feedback resistors from the battery to the FB pin.

(7)

9.3.15.1 Example

For a 3-cell Li+ charger, with $R_2 = 500 \text{ k}\Omega$, $R_1 = 100 \text{ k}\Omega$ (giving 12.6 V for voltage regulation), $I_{DISCH} = 8 \text{ mA}$, $t_{DISCH} = 1 \text{ second}$.

$$C_{MAX} = \frac{8 \text{ mA} \times 1 \text{ sec}}{0.6 \text{ V} \times \left[1 + \frac{500 \text{ k}\Omega}{100 \text{ k}\Omega} \right]} = 2.2 \text{ mF}$$

(8)

Based on these calculations, no more than 2200 μF should be allowed on the battery node for proper operation of the battery detection circuit.

9.3.16 Battery Short Protection

When SRN pin voltage is lower than 2 V, it is considered as battery short condition during charging period. The charger will shut down immediately for 1 ms, then soft start back to the charging current the same as precharge current. This prevents high current may build in output inductor and cause inductor saturation when battery terminal is shorted during charging. The converter works in nonsynchronous mode during battery short.

9.3.17 Battery Overvoltage Protection

The converter will not allow the high-side FET to turn on until the battery voltage goes below 102% of the regulation voltage. This allows 1-cycle response to an overvoltage condition – such as occurs when the load is removed or the battery is disconnected. A total 6-mA current sink from SRP/SRN to AGND allows discharging the stored output inductor energy that is transferred to the output capacitors. If battery overvoltage condition lasts for more than 30 ms, charge is disabled.

Feature Description (continued)

9.3.18 Temperature Qualification and JEITA Guideline

The controller continuously monitors battery temperature by measuring the voltage between the TS pin and GND. A negative temperature coefficient thermistor (NTC) and an external voltage divider typically develop this voltage. The controller compares this voltage against its internal thresholds to determine if charging is allowed. To initiate a charge cycle, the voltage on TS pin must be within the V_{T1} to V_{T5} thresholds. If V_{TS} is outside of this range, the controller suspends charge and waits until the battery temperature is within the V_{T1} to V_{T5} range. During the charge cycle, the battery temperature must be within the V_{T1} to V_{T5} thresholds. If battery temperature is outside of this range, the controller suspends charge and waits until the battery temperature is within the V_{T1} to V_{T5} range. The controller suspends charge by turning off the PWM charge FETs. If V_{TS} is within the range of V_{T1} and V_{T2} , charge voltage regulation on FB pin is 2.1 V and the charge current is reduced to $I_{CHARGE}/2$ (To avoid early termination during V_{T1} and V_{T2} range, fast charge current need to be bigger than 2 times of termination current); if V_{TS} is within the range of V_{T2} and V_{T3} , the charge voltage regulation on FB pin is 2.1 V; if V_{TS} is within V_{T3} and V_{T4} , the charge voltage regulation on FB pin is reduced back to 2.05 V; and if V_{TS} is within V_{T4} and V_{T5} , the charge voltage regulation on FB pin is further reduced to 2.025 V. Figure 17 summarizes the operation. See the Li-ion battery charger solutions for JEITA compliance, [SLYT365](#).

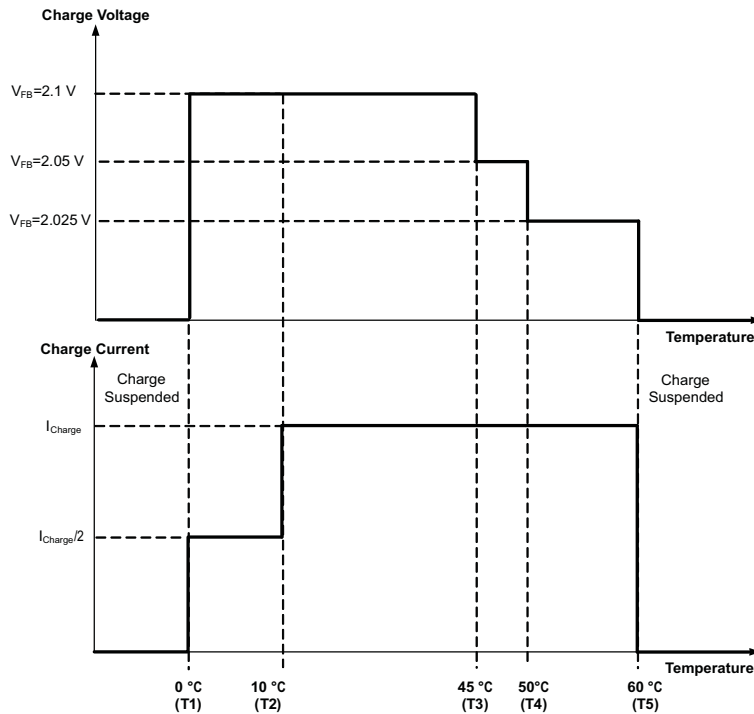


Figure 17. TS Pin, Thermistor Sense Thresholds

Assuming a 103AT NTC thermistor on the battery pack as shown in [Figure 18](#), the values of $RT1$ and $RT2$ can be determined by using [Equation 9](#) and [Equation 10](#):

$$RT2 = \frac{V_{VREF} \times RTH_{COLD} \times RTH_{HOT} \times \left(\frac{1}{VT1} - \frac{1}{VT5} \right)}{RTH_{HOT} \times \left(\frac{V_{VREF}}{VT5} - 1 \right) - RTH_{COLD} \times \left(\frac{V_{VREF}}{VT1} - 1 \right)} \quad (9)$$

$$RT1 = \frac{\frac{V_{VREF}}{VT1} - 1}{\frac{1}{RT2} + \frac{1}{RTH_{COLD}}} \quad (10)$$

Feature Description (continued)

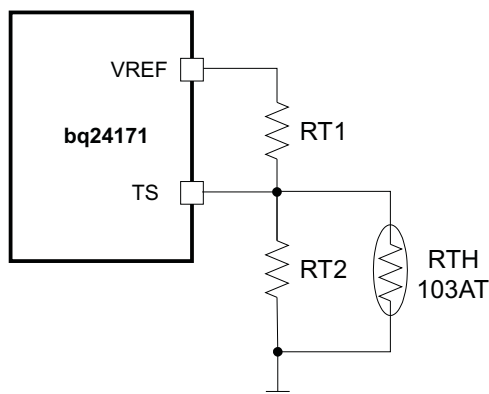


Figure 18. TS Resistor Network

For example, 103AT NTC thermistors are used to monitor the battery pack temperature. Select $T_1 = 0^\circ\text{C}$ for COLD and $T_5 = 60^\circ\text{C}$ for HOT, then we get $R_{T_2} = 6.8\text{ k}\Omega$ and $R_{T_1} = 2.2\text{ k}\Omega$ as in the [design tool](#). A small RC filter is suggested to use for system-level ESD protection.

9.3.19 MOSFET Short Circuit and Inductor Short Circuit Protection

The IC has a short circuit protection feature. Its cycle-by-cycle current monitoring feature is achieved through monitoring the voltage drop across $R_{\text{ds(on)}}$ of the MOSFETs. The charger will be latched off, but the ACFET keep on to power the system. The only way to reset the charger from latch-off status is remove adapter then plug adapter in again. Meanwhile, STAT is blinking to report the fault condition.

9.3.20 Thermal Regulation and Shutdown Protection

The QFN package has low thermal impedance, which provides good thermal conduction from the silicon to the ambient, to keep junctions temperatures low. The internal thermal regulation loop will fold back the charge current to keep the junction temperature from exceeding 120°C . As added level of protection, the charger converter turns off and self-protects whenever the junction temperature exceeds the TSHUT threshold of 150°C . The charger stays off until the junction temperature falls below 130°C .

9.3.21 Timer Fault Recovery

The IC provides a recovery method to deal with timer fault conditions. The following summarizes this method:

Condition 1: The battery voltage is above the recharge threshold and a time-out fault occurs.

Recovery Method: The timer fault will clear when the battery voltage falls below the recharge threshold, and battery detection will begin. A POR or taking ISET below 40 mV will also clear the fault.

Condition 2: The battery voltage is below the recharge threshold and a time-out fault occurs.

Recovery Method: Under this scenario, the IC applies the fault current to the battery. This small current is used to detect a battery removal condition and remains on as long as the battery voltage stays below the recharge threshold. If the battery voltage goes above the recharge threshold, the IC disabled the fault current and executes the recovery method described in Condition 1. A POR or taking ISET below 40 mV will also clear the fault.

9.3.22 Inductor, Capacitor, and Sense Resistor Selection Guidelines

The IC provides internal loop compensation. With this scheme, the best stability occurs when the LC resonant frequency, f_o , is approximately 15 kHz – 25 kHz for the IC.

$$f_o = \frac{1}{2\pi\sqrt{LC}} \quad (11)$$

Feature Description (continued)

Table 2 summarizes typical LC components for various charge currents.

Table 2. Typical Values as a Function of Charge Current

| CHARGE CURRENT | 1 A | 2 A | 3 A | 4 A |
|--------------------|-------------|-------------|-------------|-------------|
| Output inductor L | 6.8 μ H | 3.3 μ H | 3.3 μ H | 2.2 μ H |
| Output capacitor C | 10 μ F | 20 μ F | 20 μ F | 30 μ F |

9.3.23 Charge Status Outputs

The open-drain STAT outputs indicate various charger operations as listed in Table 3. These status pins can be used to drive LEDs or communicate with the host processor. OFF indicates that the open-drain transistor is turned off.

Table 3. STAT Pin Definition

| CHARGE STATE | STAT |
|---|-------|
| Charge in progress (including recharging) | ON |
| Charge complete, Sleep mode, Charge disabled | OFF |
| Charge suspend, Input overvoltage, Battery overvoltage, timer fault, , battery absent | BLINK |

9.4 Device Functional Modes

The bq24171 is a JEITA-compliant stand-alone switched-mode charger with power path selector. The device can operate from either a qualified adapter or supply system power from the battery. Dynamic Power Management (DPM) mode allows for a smaller adapter to be used effectively in systems with more dynamic system loads.

The bq24171 device provides power path selector gate driver ACDRV/CMSRC on input NMOS pair ACFET (Q1) and RBFET (Q2), and BATDRV on a battery PMOS device (Q3). When the qualified adapter is present, the system is directly connected to the adapter. Otherwise, the system is connected to the battery. In addition, the power path prevents battery from boosting back to the input.

The bq24171 features DPM to reduce the charge current when the input power limit is reached to avoid overloading the adapter. A highly accurate current-sense amplifier enables precise measurement of input current from adapter to monitor overall system power.

The total input current from an AC adapter or other DC sources is a function of the system supply current and the battery charging current. System current normally fluctuated as portions of the systems are powered up or down. Without DPM, the source must be able to supply the maximum system current and the maximum available charger input current simultaneously. By using DPM, the input current regulator reduces the charging current when the summation of system power and charge power exceeds the maximum input power. Therefore, the current capability of the AC adapter can be lowered, thus reducing system cost.

Although the bq24171 is a stand-alone charger, external control circuitry can effectively be used to change pin settings such as ISET, ACSET, and enable Battery Learn mode to accommodated for dynamic charging conditions.

10 Application and Implementation

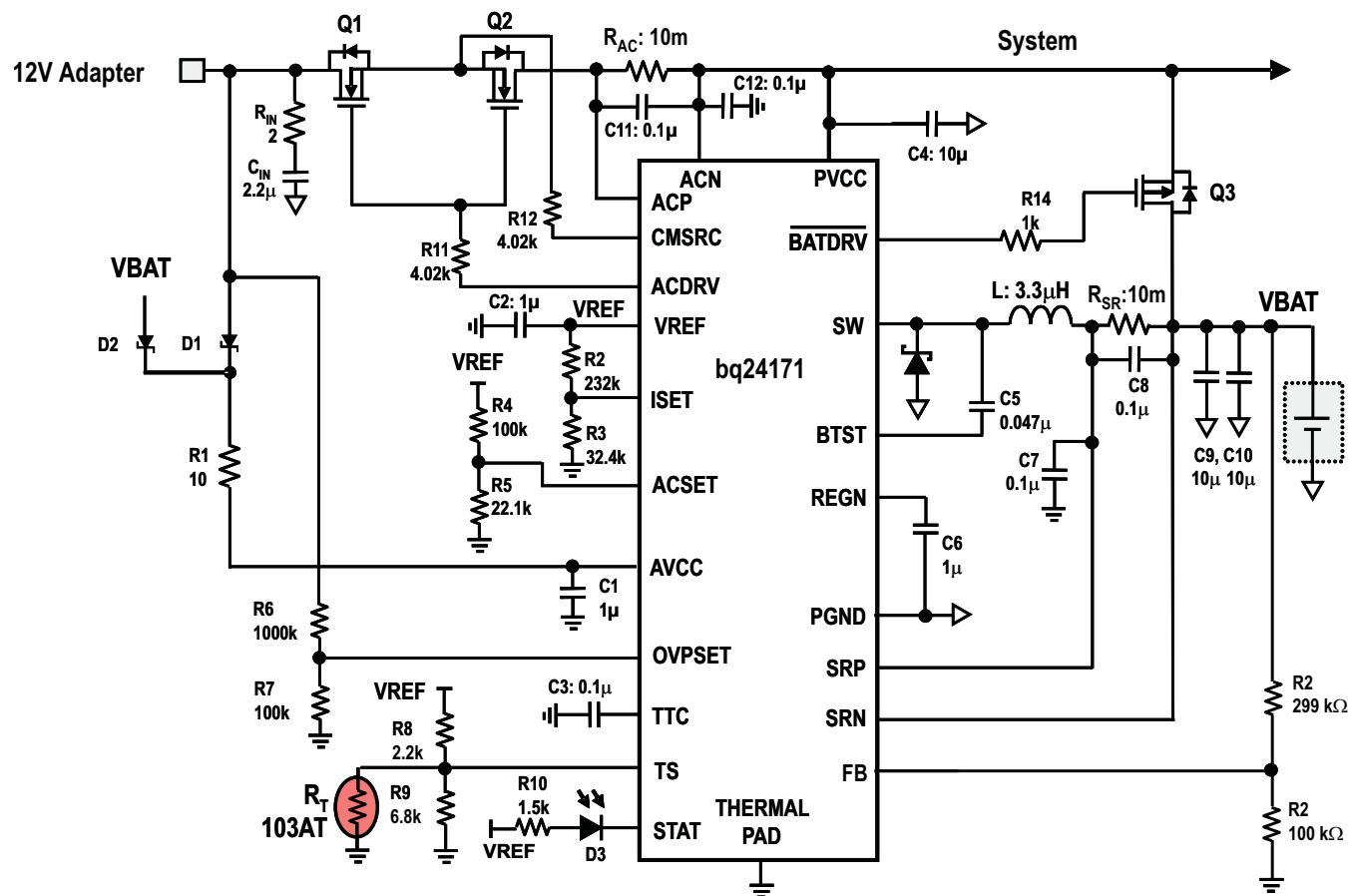
NOTE

Information in the following applications sections is not part of the TI component specification, and TI does not warrant its accuracy or completeness. TI's customers are responsible for determining suitability of components for their purposes. Customers should validate and test their design implementation to confirm system functionality.

10.1 Application Information

A typical application consists of a bq24171 with power path management and from 1- to 3-cell series Li-ion or Li-polymer battery in a wide variety of portable applications where JEITA-compatible charging limits are desired.

10.2 Typical Application



12-V input, 2-cell battery 8.4 V, 2-A charge current, 0.2-A precharge/termination current, 3-A DPM current, 18-V input OVP

Figure 19. Typical Application Schematic

Typical Application (continued)

10.2.1 Design Requirements

For this design example, use the parameters listed in [Table 4](#) as the input parameters.

Table 4. Design Parameters

| PARAMETER | EXAMPLE VALUE |
|-------------------------|---------------|
| Input Voltage Range | 4.5 V - 17 V |
| Input Current DPM Limit | 600 mA min |
| Battery Voltage | 13.5 V max |
| Charge Current | 4 A max |

10.2.2 Detailed Design Procedure

10.2.2.1 Inductor Selection

The bq24171 has a 1600-kHz switching frequency to allow the use of small inductor and capacitor values. Inductor saturation current should be higher than the charging current (I_{CHG}) plus half the ripple current (I_{RIPPLE}):

$$I_{SAT} \geq I_{CHG} + (1/2)I_{RIPPLE} \quad (12)$$

Inductor ripple current depends on input voltage (V_{IN}), duty cycle ($D = V_{OUT}/V_{IN}$), switching frequency (f_s), and inductance (L):

$$I_{RIPPLE} = \frac{V_{IN} \times D \times (1-D)}{f_s \times L} \quad (13)$$

The maximum inductor ripple current happens with $D = 0.5$ or close to 0.5. Usually inductor ripple is designed in the range of 20% to 40% of the maximum charging current as a trade-off between inductor size and efficiency for a practical design.

10.2.2.2 Input Capacitor

The input capacitor should have enough ripple current rating to absorb input switching ripple current. The worst case RMS ripple current is half of the charging current when duty cycle is 0.5. If the converter does not operate at 50% duty cycle, then the worst case capacitor RMS current I_{CIN} occurs where the duty cycle is closest to 50% and can be estimated by the following equation:

$$I_{CIN} = I_{CHG} \times \sqrt{D \times (1-D)} \quad (14)$$

A low ESR ceramic capacitor such as X7R or X5R is preferred for the input decoupling capacitor and should be placed as close as possible to the drain of the high-side MOSFET and source of the low-side MOSFET. The voltage rating of the capacitor must be higher than the normal input voltage level. A 25-V rating or higher capacitor is preferred for a 15-V input voltage. A 20- μ F capacitance is suggested for a typical 3-A to 4-A charging current.

10.2.2.3 Output Capacitor

The output capacitor also should have enough ripple current rating to absorb output switching ripple current. The output capacitor RMS current I_{COUT} is given as:

$$I_{COUT} = \frac{I_{RIPPLE}}{2 \times \sqrt{3}} \approx 0.29 \times I_{RIPPLE} \quad (15)$$

The output capacitor voltage ripple can be calculated as follows:

$$\Delta V_O = \frac{V_{OUT}}{8LCf_s^2} \left(1 - \frac{V_{OUT}}{V_{IN}} \right) \quad (16)$$

At certain input/output voltages and switching frequencies, the voltage ripple can be reduced by increasing the output filter LC.

The bq24171 has an internal loop compensator. To achieve good loop stability, the resonant frequency of the output inductor and output capacitor should be designed from 15 kHz to 25 kHz. The preferred ceramic capacitor has a 25-V or higher rating, X7R or X5R.

10.2.2.4 Input Filter Design

During adapter hot plug-in, the parasitic inductance and the input capacitor from the adapter cable form a second-order system. The voltage spike at the AVCC pin may be beyond the IC maximum voltage rating and damage the IC. The input filter must be carefully designed and tested to prevent an overvoltage event on the AVCC pin.

There are several methods to damping or limiting the overvoltage spike during adapter hot plug-in. An electrolytic capacitor with high ESR as an input capacitor can damp the overvoltage spike well below the IC maximum pin voltage rating. A high current capability TVS Zener diode can also limit the overvoltage level to an IC safe level. However, these two solutions may not be lowest cost or smallest size.

A cost-effective and small-size solution is shown in Figure 20. R1 and C1 are composed of a damping RC network to damp the hot plug-in oscillation. As a result, the overvoltage spike is limited to a safe level. D1 is used for reverse voltage protection for the AVCC pin. C2 is the AVCC pin decoupling capacitor and it should be placed as close as possible to the AVCC pin. R2 and C2 form a damping RC network to further protect the IC from high dv/dt and high voltage spikes. The C2 value should be less than the C1 value so R1 can dominant the equivalent ESR value to provide enough damping effect for hot plug-in. R1 and R2 must be sized to handle in-rush current power loss according to the resistor manufacturer's data sheet. Verify the filter component values with a real application and make any minor adjustments needed to fit in the real application circuit.

If the input is 5 V (USB host or USB adapter), diode D1 can be omitted. R2 must be 5 Ω or higher to limit the current if the input is reversely inserted.

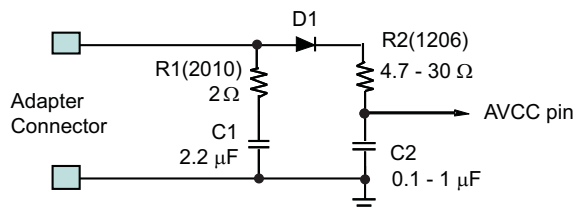


Figure 20. Input Filter

10.2.2.5 Input ACFET and RBFET Selection

N-type MOSFETs are used as input ACFET(Q1) and RBFET(Q2) for better cost-effective and small-size solution, as shown in Figure 23. Normally, there is a total capacitance of 50 μ F connected at PVCC node; 10- μ F capacitor for buck converter of bq24171 and 40- μ F capacitor for system side. There is a surge current during Q1 turnon period when a valid adapter is inserted. Decreasing the turnon speed of Q1 can limit this surge current in desirable range by selecting a MOSFET with relative bigger C_{GD} and/or C_{GS} . If Q1 turns on too fast, we must add external C_{GD} and/or C_{GS} . For example, 4.7-nF C_{GD} and 47-nF C_{GS} are adopted on EVM while using NexFET CSD17313 as Q1.

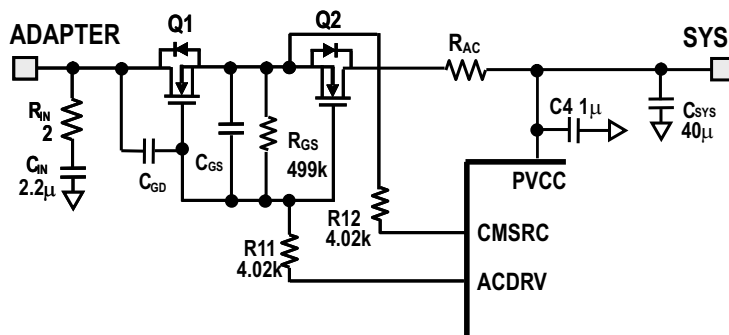


Figure 21. Input ACFET and RBFET

10.2.3 Application Curves

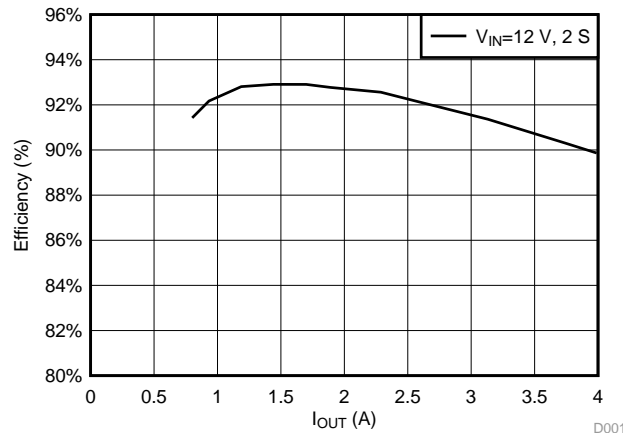
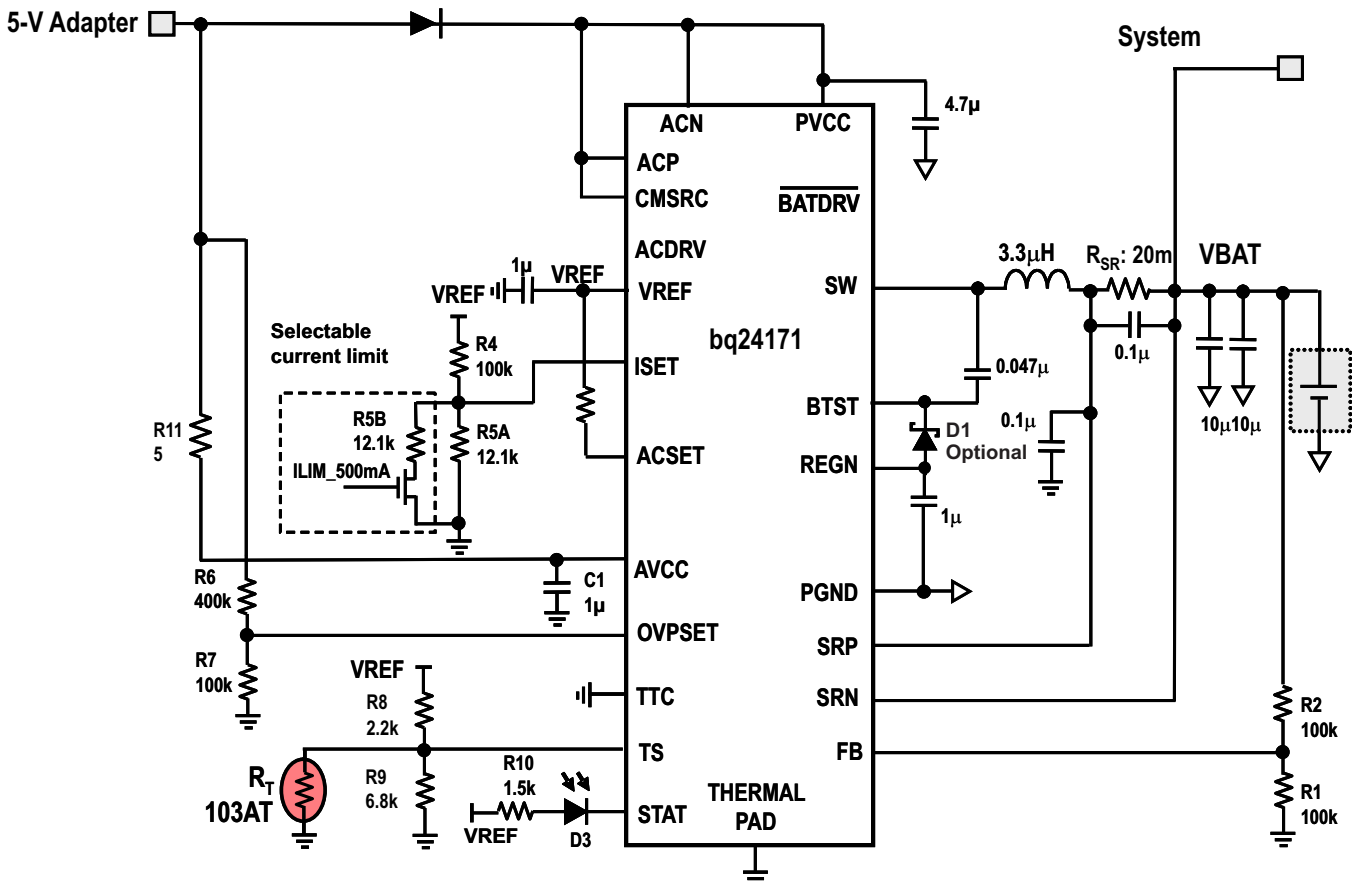


Figure 22. Charge Efficiency

10.3 System Examples



USB with input OVP 8 V, selectable charge current limit of 900 mA or 500 mA, system connected after sense resistor

Figure 23. Typical Application Schematic With Single-Cell Unremovable Battery

11 Power Supply Recommendations

In order to provide an output voltage on SYS, the bq24170/bq24172 requires a power supply from 4.5-V to 17-V input with ideally >500-mA current rating connected to VBUS; or, a single-cell Li-Ion battery with voltage > VBATUVLO connected to BAT.

12 Layout

12.1 Layout Guidelines

The switching node rise and fall times should be minimized for minimum switching loss. Proper layout of the components to minimize the high-frequency current path loop (see [Figure 24](#)) is important to prevent electrical and magnetic field radiation and high-frequency resonant problems. The following is a PCB layout priority list for proper layout. Layout of the PCB according to this specific order is essential.

1. Place the input capacitor as close as possible to the PVCC supply and ground connections and use the shortest copper trace connection. These parts should be placed on the same layer of the PCB instead of on different layers and using vias to make this connection.
2. Place the inductor input terminal as close as possible to the SW terminal. Minimize the copper area of this trace to lower electrical and magnetic field radiation but make the trace wide enough to carry the charging current. Do not use multiple layers in parallel for this connection. Minimize parasitic capacitance from this area to any other trace or plane.
3. The charging current sensing resistor should be placed right next to the inductor output. Route the sense leads connected across the sensing resistor back to the IC in the same layer, close to each other (minimize loop area) and do not route the sense leads through a high-current path (see [Figure 25](#) for Kelvin connection for best current accuracy). Place decoupling capacitor on these traces next to the IC.
4. Place the output capacitor next to the sensing resistor output and ground.
5. Output capacitor ground connections must be tied to the same copper that connects to the input capacitor ground before connecting to system ground.
6. Route analog ground separately from power ground and use a single ground connection to tie charger power ground to charger analog ground. Just beneath the IC use analog ground copper pour but avoid power pins to reduce inductive and capacitive noise coupling. Use the thermal pad as a single ground connection point to connect analog ground and power ground together, or use a 0- Ω resistor to tie analog ground to power ground. A star-connection under the thermal pad is highly recommended.
7. It is critical to solder the exposed thermal pad on the backside of the IC package to the PCB ground. Ensure that there are sufficient thermal vias directly under the IC, connecting to the ground plane on the other layers.
8. Decoupling capacitors must be placed next to the IC pins and make trace connection as short as possible.
9. The number and physical size of the vias must be enough for a given current path.

12.2 Layout Example

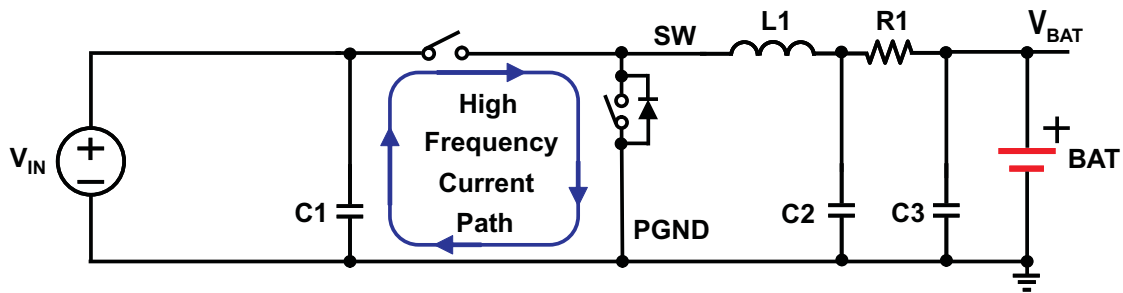


Figure 24. High-Frequency Current Path

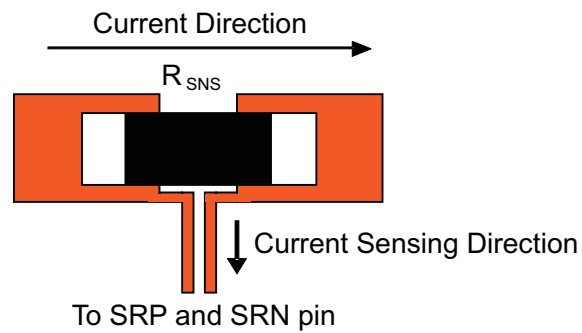


Figure 25. Sensing Resistor PCB Layout

13 器件和文档支持

13.1 器件支持

《bqswitcherII 计算工具》，[SLUC244](#)

13.2 文档支持

13.2.1 相关文档

相关文档如下：

- 《符合 *JEITA* 标准的锂离子电池充电器解决方案》，[SLYT365](#)

13.3 商标

All trademarks are the property of their respective owners.

13.4 静电放电警告



这些装置包含有限的内置 ESD 保护。存储或装卸时，应将导线一起截短或将装置放置于导电泡棉中，以防止 MOS 门极遭受静电损伤。

13.5 术语表

[SLYZ022](#) — *TI* 术语表。

这份术语表列出并解释术语、首字母缩略词和定义。

14 机械、封装和可订购信息

以下页中包括机械、封装和可订购信息。 这些信息是针对指定器件可提供的最新数据。 这些数据会在无通知且不对本文档进行修订的情况下发生改变。 欲获得该数据表的浏览器版本，请查阅左侧的导航栏。

重要声明

德州仪器(TI) 及其下属子公司有权根据 JESD46 最新标准, 对所提供的产品和服务进行更正、修改、增强、改进或其它更改, 并有权根据 JESD48 最新标准中止提供任何产品和服务。客户在下订单前应获取最新的相关信息, 并验证这些信息是否完整且是最新的。所有产品的销售都遵循在订单确认时所提供的TI 销售条款与条件。

TI 保证其所销售的组件的性能符合产品销售时 TI 半导体产品销售条件与条款的适用规范。仅在 TI 保证的范围内, 且 TI 认为 有必要时才会使用测试或其它质量控制技术。除非适用法律做出了硬性规定, 否则没有必要对每种组件的所有参数进行测试。

TI 对应用帮助或客户产品设计不承担任何义务。客户应对其使用 TI 组件的产品和应用自行负责。为尽量减小与客户产品和应用相关的风险, 客户应提供充分的设计与操作安全措施。

TI 不对任何 TI 专利权、版权、屏蔽作品权或其它与使用了 TI 组件或服务的组合设备、机器或流程相关的 TI 知识产权中授予 的直接或隐含权限作出任何保证或解释。TI 所发布的与第三方产品或服务有关的信息, 不能构成从 TI 获得使用这些产品或服务 的许可、授权、或认可。使用此类信息可能需要获得第三方的专利权或其它知识产权方面的许可, 或是 TI 的专利权或其它 知识产权方面的许可。

对于 TI 的产品手册或数据表中 TI 信息的重要部分, 仅在没有对内容进行任何篡改且带有相关授权、条件、限制和声明的情况 下才允许进行复制。TI 对此类篡改过的文件不承担任何责任或义务。复制第三方的信息可能需要服从额外的限制条件。

在转售 TI 组件或服务时, 如果对该组件或服务参数的陈述与 TI 标明的参数相比存在差异或虚假成分, 则会失去相关 TI 组件 或服务的所有明示或暗示授权, 且这是不正当的、欺诈性商业行为。TI 对任何此类虚假陈述均不承担任何责任或义务。

客户认可并同意, 尽管任何应用相关信息或支持仍可能由 TI 提供, 但他们将独力负责满足与其产品及其应用中使用的 TI 产品 相关的所有法律、法规和安全相关要求。客户声明并同意, 他们具备制定与实施安全措施所需的全部专业技术和知识, 可预见 故障的危险后果、监测故障及其后果、降低有可能造成人身伤害的故障的发生机率并采取适当的补救措施。客户将全额赔偿因 在此类安全关键应用中使用任何 TI 组件而对 TI 及其代理造成的任何损失。

在某些场合中, 为了推进安全相关应用有可能对 TI 组件进行特别的促销。TI 的目标是利用此类组件帮助客户设计和创立其特 有的可满足适用的功能安全性标准和要求的终端产品解决方案。尽管如此, 此类组件仍然服从这些条款。

TI 组件未获得用于 FDA Class III (或类似的生命攸关医疗设备) 的授权许可, 除非各方授权官员已经达成了专门管控此类使 用的特别协议。

只有那些 TI 特别注明属于军用等级或“增强型塑料”的 TI 组件才是设计或专门用于军事/航空应用或环境的。购买者认可并同 意, 对并非指定面向军事或航空航天用途的 TI 组件进行军事或航空航天方面的应用, 其风险由客户单独承担, 并且由客户独 力负责满足与此类使用相关的所有法律和法规要求。

TI 已明确指定符合 ISO/TS16949 要求的产品, 这些产品主要用于汽车。在任何情况下, 因使用非指定产品而无法达到 ISO/TS16949 要求, TI 不承担任何责任。

| | 产品 | | 应用 |
|---------------|--|--------------|--|
| 数字音频 | www.ti.com.cn/audio | 通信与电信 | www.ti.com.cn/telecom |
| 放大器和线性器件 | www.ti.com.cn/amplifiers | 计算机及周边 | www.ti.com.cn/computer |
| 数据转换器 | www.ti.com.cn/dataconverters | 消费电子 | www.ti.com.cn/consumer-apps |
| DLP® 产品 | www.dlp.com | 能源 | www.ti.com.cn/energy |
| DSP - 数字信号处理器 | www.ti.com.cn/dsp | 工业应用 | www.ti.com.cn/industrial |
| 时钟和计时器 | www.ti.com.cn/clockandtimers | 医疗电子 | www.ti.com.cn/medical |
| 接口 | www.ti.com.cn/interface | 安防应用 | www.ti.com.cn/security |
| 逻辑 | www.ti.com.cn/logic | 汽车电子 | www.ti.com.cn/automotive |
| 电源管理 | www.ti.com.cn/power | 视频和影像 | www.ti.com.cn/video |
| 微控制器 (MCU) | www.ti.com.cn/microcontrollers | | |
| RFID 系统 | www.ti.com.cn/rfidsys | | |
| OMAP应用处理器 | www.ti.com.cn/omap | | |
| 无线连通性 | www.ti.com.cn/wirelessconnectivity | 德州仪器在线技术支持社区 | www.deyisupport.com |

邮寄地址: 上海市浦东新区世纪大道1568号, 中建大厦32楼邮政编码: 200122
Copyright © 2015, 德州仪器半导体技术(上海)有限公司

PACKAGING INFORMATION

| Orderable Device | Status (1) | Package Type | Package Drawing | Pins | Package Qty | Eco Plan (2) | Lead finish/ Ball material (6) | MSL Peak Temp (3) | Op Temp (°C) | Device Marking (4/5) | Samples |
|------------------|---------------|--------------|--------------------|------|----------------|-----------------|--------------------------------------|----------------------|--------------|-------------------------|-------------------------|
| BQ24171RGYR | ACTIVE | VQFN | RGY | 24 | 3000 | RoHS & Green | NIPDAU | Level-2-260C-1 YEAR | -40 to 85 | BQ24171 | Samples |
| BQ24171RGYT | ACTIVE | VQFN | RGY | 24 | 250 | RoHS & Green | NIPDAU | Level-2-260C-1 YEAR | -40 to 85 | BQ24171 | Samples |

(1) The marketing status values are defined as follows:

ACTIVE: Product device recommended for new designs.

LIFEBUY: TI has announced that the device will be discontinued, and a lifetime-buy period is in effect.

NRND: Not recommended for new designs. Device is in production to support existing customers, but TI does not recommend using this part in a new design.

PREVIEW: Device has been announced but is not in production. Samples may or may not be available.

OBsolete: TI has discontinued the production of the device.

(2) **RoHS:** TI defines "RoHS" to mean semiconductor products that are compliant with the current EU RoHS requirements for all 10 RoHS substances, including the requirement that RoHS substance do not exceed 0.1% by weight in homogeneous materials. Where designed to be soldered at high temperatures, "RoHS" products are suitable for use in specified lead-free processes. TI may reference these types of products as "Pb-Free".

RoHS Exempt: TI defines "RoHS Exempt" to mean products that contain lead but are compliant with EU RoHS pursuant to a specific EU RoHS exemption.

Green: TI defines "Green" to mean the content of Chlorine (Cl) and Bromine (Br) based flame retardants meet JS709B low halogen requirements of <=1000ppm threshold. Antimony trioxide based flame retardants must also meet the <=1000ppm threshold requirement.

(3) MSL, Peak Temp. - The Moisture Sensitivity Level rating according to the JEDEC industry standard classifications, and peak solder temperature.

(4) There may be additional marking, which relates to the logo, the lot trace code information, or the environmental category on the device.

(5) Multiple Device Markings will be inside parentheses. Only one Device Marking contained in parentheses and separated by a "~" will appear on a device. If a line is indented then it is a continuation of the previous line and the two combined represent the entire Device Marking for that device.

(6) Lead finish/Ball material - Orderable Devices may have multiple material finish options. Finish options are separated by a vertical ruled line. Lead finish/Ball material values may wrap to two lines if the finish value exceeds the maximum column width.

Important Information and Disclaimer:The information provided on this page represents TI's knowledge and belief as of the date that it is provided. TI bases its knowledge and belief on information provided by third parties, and makes no representation or warranty as to the accuracy of such information. Efforts are underway to better integrate information from third parties. TI has taken and continues to take reasonable steps to provide representative and accurate information but may not have conducted destructive testing or chemical analysis on incoming materials and chemicals. TI and TI suppliers consider certain information to be proprietary, and thus CAS numbers and other limited information may not be available for release.

In no event shall TI's liability arising out of such information exceed the total purchase price of the TI part(s) at issue in this document sold by TI to Customer on an annual basis.

TAPE AND REEL INFORMATION


*All dimensions are nominal

| Device | Package Type | Package Drawing | Pins | SPQ | Reel Diameter (mm) | Reel Width W1 (mm) | A0 (mm) | B0 (mm) | K0 (mm) | P1 (mm) | W (mm) | Pin1 Quadrant |
|-------------|--------------|-----------------|------|------|--------------------|--------------------|---------|---------|---------|---------|--------|---------------|
| BQ24171RGYR | VQFN | RGY | 24 | 3000 | 330.0 | 12.4 | 3.8 | 5.8 | 1.2 | 8.0 | 12.0 | Q1 |
| BQ24171RGYT | VQFN | RGY | 24 | 250 | 180.0 | 12.4 | 3.8 | 5.8 | 1.2 | 8.0 | 12.0 | Q1 |

TAPE AND REEL BOX DIMENSIONS



*All dimensions are nominal

| Device | Package Type | Package Drawing | Pins | SPQ | Length (mm) | Width (mm) | Height (mm) |
|-------------|--------------|-----------------|------|------|-------------|------------|-------------|
| BQ24171RGYR | VQFN | RGY | 24 | 3000 | 367.0 | 367.0 | 35.0 |
| BQ24171RGYT | VQFN | RGY | 24 | 250 | 210.0 | 185.0 | 35.0 |

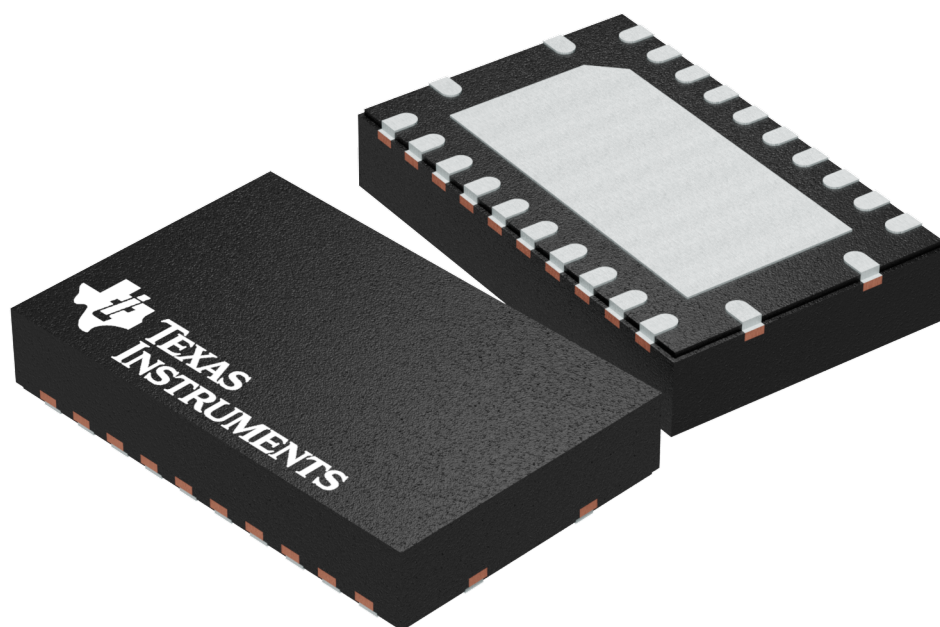
GENERIC PACKAGE VIEW

RGY 24

VQFN - 1 mm max height

5.5 x 3.5 mm, 0.5 mm pitch

PLASTIC QUAD FLATPACK - NO LEAD

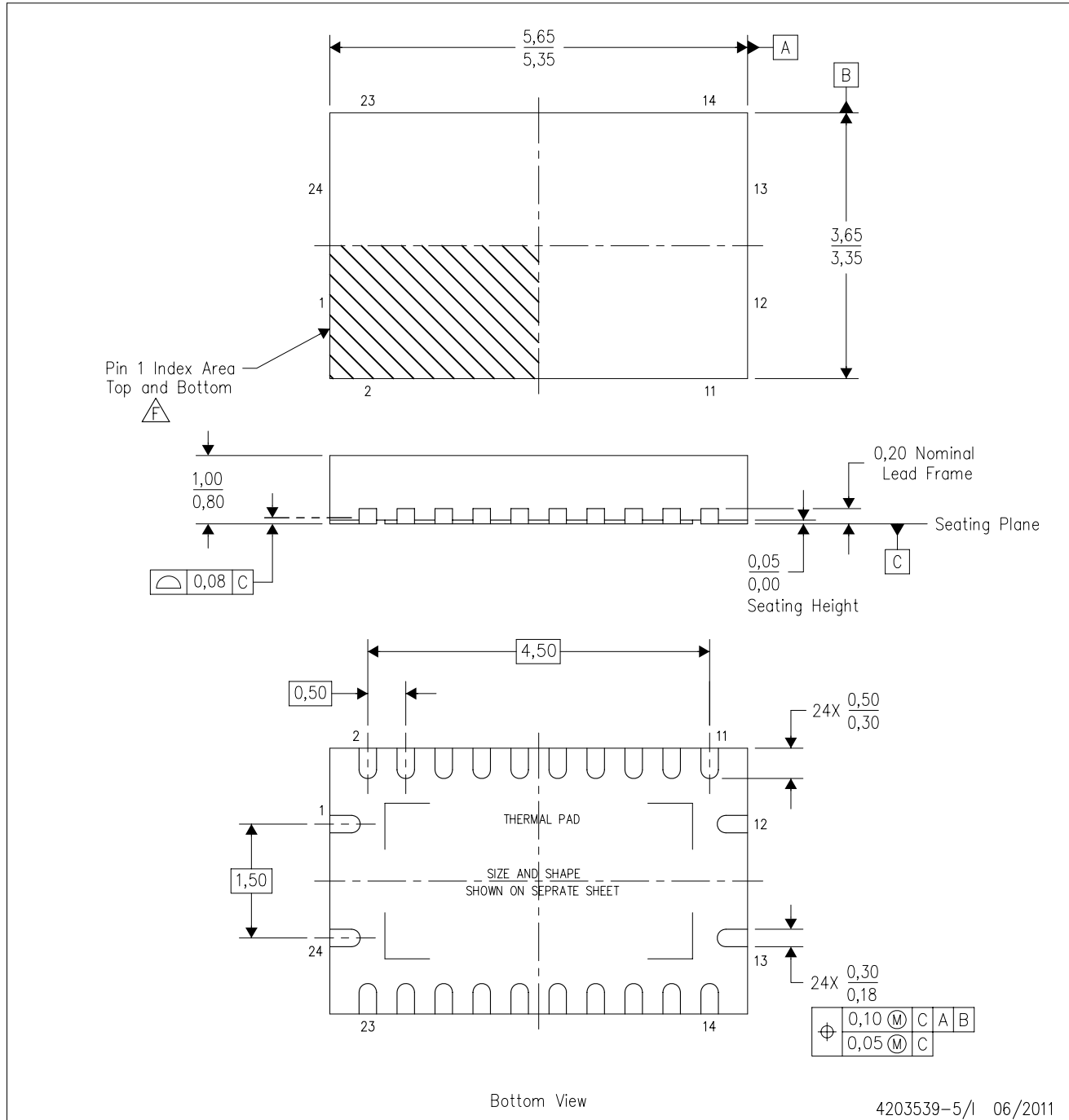


Images above are just a representation of the package family, actual package may vary.
Refer to the product data sheet for package details.

4203539-5/J

RGY (R-PVQFN-N24)

PLASTIC QUAD FLATPACK NO-LEAD



- NOTES:
- All linear dimensions are in millimeters. Dimensioning and tolerancing per ASME Y14.5M-1994.
 - This drawing is subject to change without notice.
 - QFN (Quad Flatpack No-Lead) package configuration.
 - The package thermal pad must be soldered to the board for thermal and mechanical performance.
 - See the additional figure in the Product Data Sheet for details regarding the exposed thermal pad features and dimensions.
 - Pin 1 identifiers are located on both top and bottom of the package and within the zone indicated. The Pin 1 identifiers are either a molded, marked, or metal feature.
 - Package complies to JEDEC MO-241 variation BA.

RGY (R-PVQFN-N24)

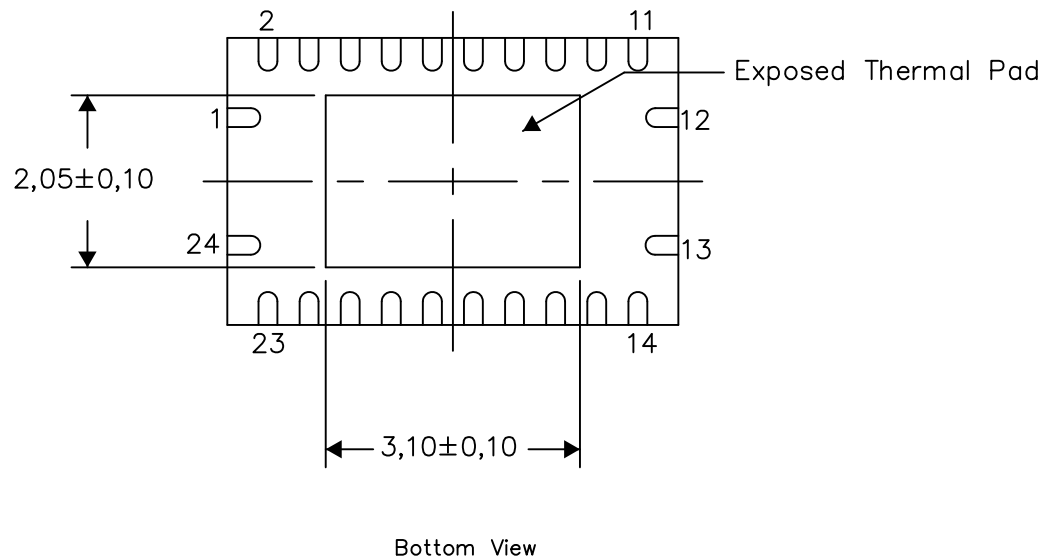
PLASTIC QUAD FLATPACK NO-LEAD

THERMAL INFORMATION

This package incorporates an exposed thermal pad that is designed to be attached directly to an external heatsink. The thermal pad must be soldered directly to the printed circuit board (PCB). After soldering, the PCB can be used as a heatsink. In addition, through the use of thermal vias, the thermal pad can be attached directly to the appropriate copper plane shown in the electrical schematic for the device, or alternatively, can be attached to a special heatsink structure designed into the PCB. This design optimizes the heat transfer from the integrated circuit (IC).

For information on the Quad Flatpack No-Lead (QFN) package and its advantages, refer to Application Report, QFN/SON PCB Attachment, Texas Instruments Literature No. SLUA271. This document is available at www.ti.com.

The exposed thermal pad dimensions for this package are shown in the following illustration.



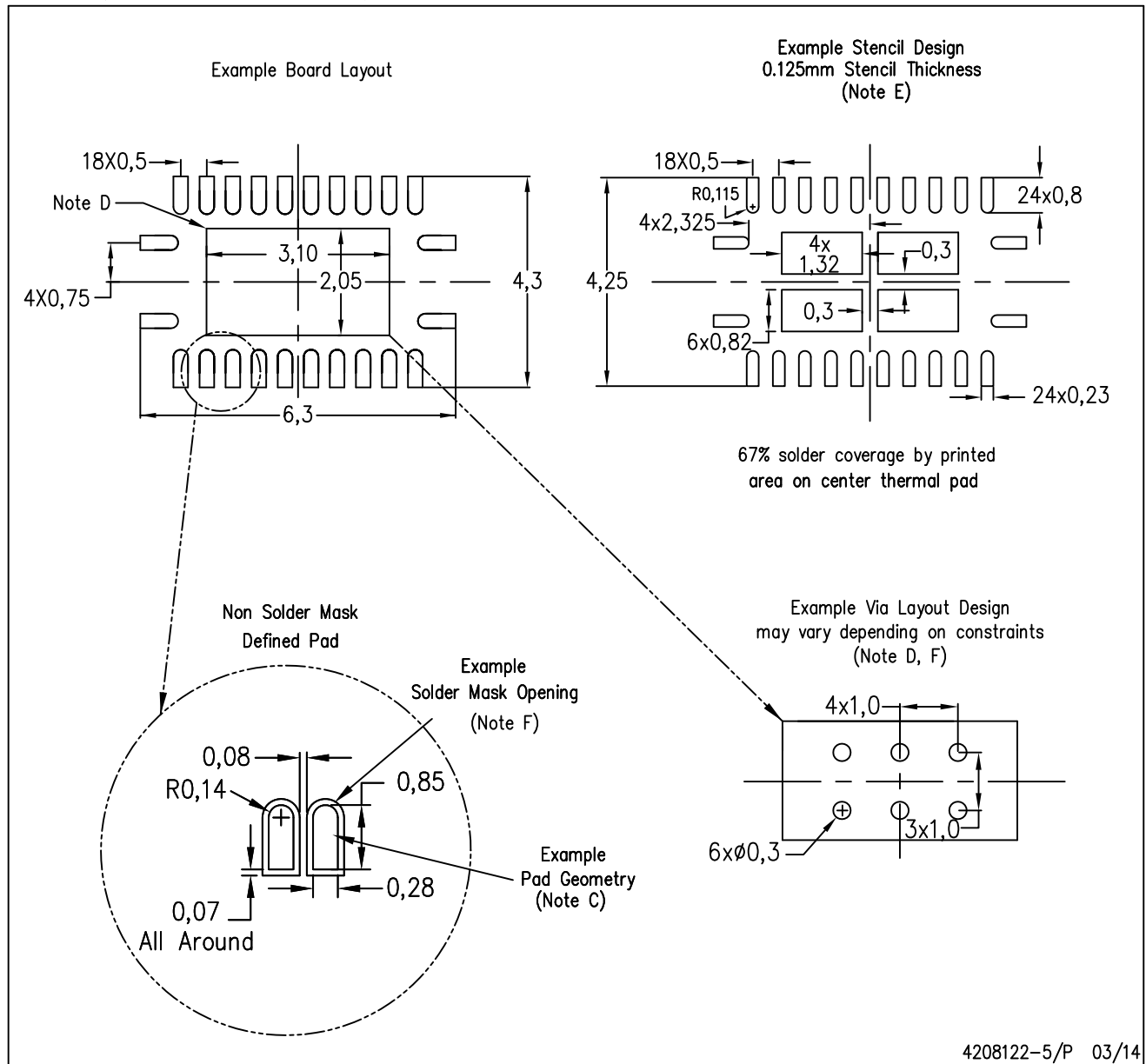
Exposed Thermal Pad Dimensions

4206353-6/P 03/14

NOTE: All linear dimensions are in millimeters

RGY (R-PVQFN-N24)

PLASTIC QUAD FLATPACK NO-LEAD



- NOTES:
- All linear dimensions are in millimeters.
 - This drawing is subject to change without notice.
 - Publication IPC-7351 is recommended for alternate designs.
 - This package is designed to be soldered to a thermal pad on the board. Refer to Application Note, Quad Flat-Pack Packages, Texas Instruments Literature No. SLUA271, and also the Product Data Sheets for specific thermal information, via requirements, and recommended board layout. These documents are available at www.ti.com <<http://www.ti.com>>.
 - Laser cutting apertures with trapezoidal walls and also rounding corners will offer better paste release. Customers should contact their board assembly site for stencil design recommendations. Refer to IPC 7525 for stencil design considerations.
 - Customers should contact their board fabrication site for minimum solder mask web tolerances between signal pads.

重要声明和免责声明

TI 均以“原样”提供技术性 & 可靠性数据（包括数据表）、设计资源（包括参考设计）、应用或其他设计建议、网络工具、安全信息和其他资源，不保证其中不含任何瑕疵，且不做任何明示或暗示的担保，包括但不限于对适销性、适合某特定用途或不侵犯任何第三方知识产权的暗示担保。

所述资源可供专业开发人员应用 TI 产品进行设计使用。您将对以下行为独自承担全部责任：(1) 针对您的应用选择合适的 TI 产品；(2) 设计、验证并测试您的应用；(3) 确保您的应用满足相应标准以及任何其他安全、安保或其他要求。所述资源如有变更，恕不另行通知。TI 对您使用所述资源的授权仅限于开发资源所涉及 TI 产品的相关应用。除此之外不得复制或展示所述资源，也不提供其它 TI 或任何第三方的知识产权授权许可。如因使用所述资源而产生任何索赔、赔偿、成本、损失及债务等，TI 对此概不负责，并且您须赔偿由此对 TI 及其代表造成的损害。

TI 所提供产品均受 TI 的销售条款 (<http://www.ti.com.cn/zh-cn/legal/termsofsale.html>) 以及 [ti.com.cn](http://www.ti.com.cn) 上或随附 TI 产品提供的其他可适用条款的约束。TI 提供所述资源并不扩展或以其他方式更改 TI 针对 TI 产品所发布的可适用的担保范围或担保免责声明。

邮寄地址：上海市浦东新区世纪大道 1568 号中建大厦 32 楼，邮政编码：200122
Copyright © 2020 德州仪器半导体技术（上海）有限公司